

# New AUI

Existing user update  
Status, Releases, What's Next



# Agenda

- The New AUI Journey
- What's happening now
- What's next
- Staged Release
- Upgrade Process
- Mini Demo
- Questions



**Jeff Welton**  
Regional Sales Manager  
US East



**John Whyte**  
Head of Marketing &  
Product Strategy



**Cameron Kelly**  
Software Development  
Lead

“Today’s content will be of most interest to legacy flash AUI users”

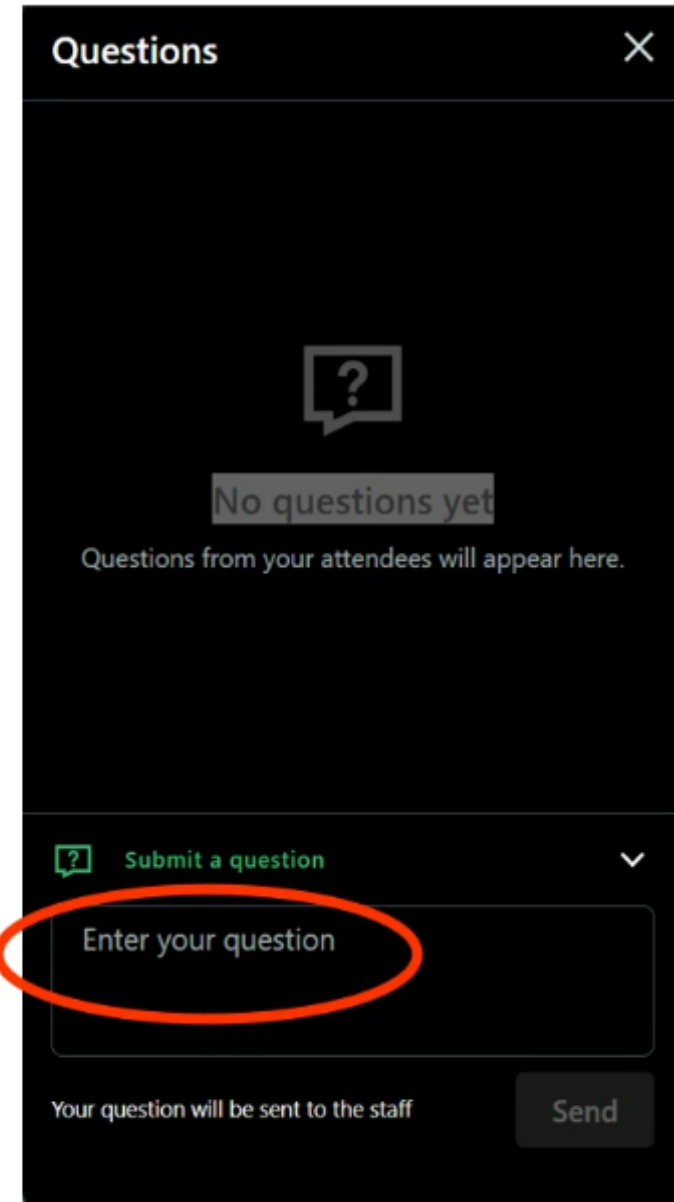
# Your questions please?



1. Find Questions symbol on the webinar control menu.
2. Please enter your questions in the text box of the webinar control panel window. (remember to press send)

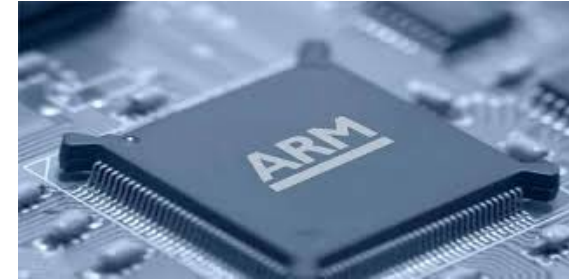


Remember: The completion of a Nautel webinar qualifies for  $\frac{1}{2}$  SBE re-certification credit, identified under Category I of the Re-certification Schedule for SBE Certifications.

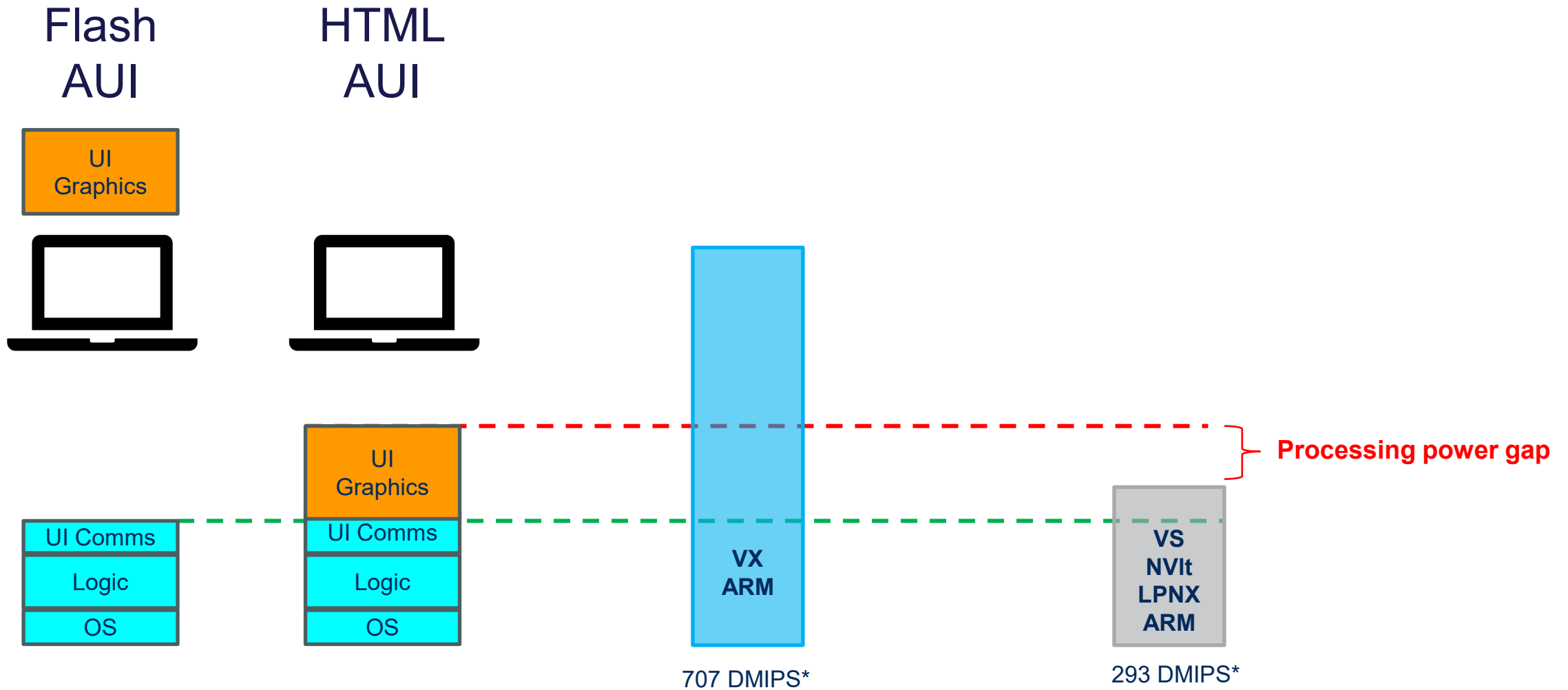


# The New AUI - Journey

- Rewriting AUI from scratch
  - Invested heavily
  - 40+ person years
- Technology evolution
  - Putting new tech on old tech: hard & risky
  - 4 CPU hosts, 8 platforms, multiple displays
- Quality target set high: “It’s a Nautel”
- High feature bar: Feature-match with Flash version
  - Flash: Efficient at moving processing off chip

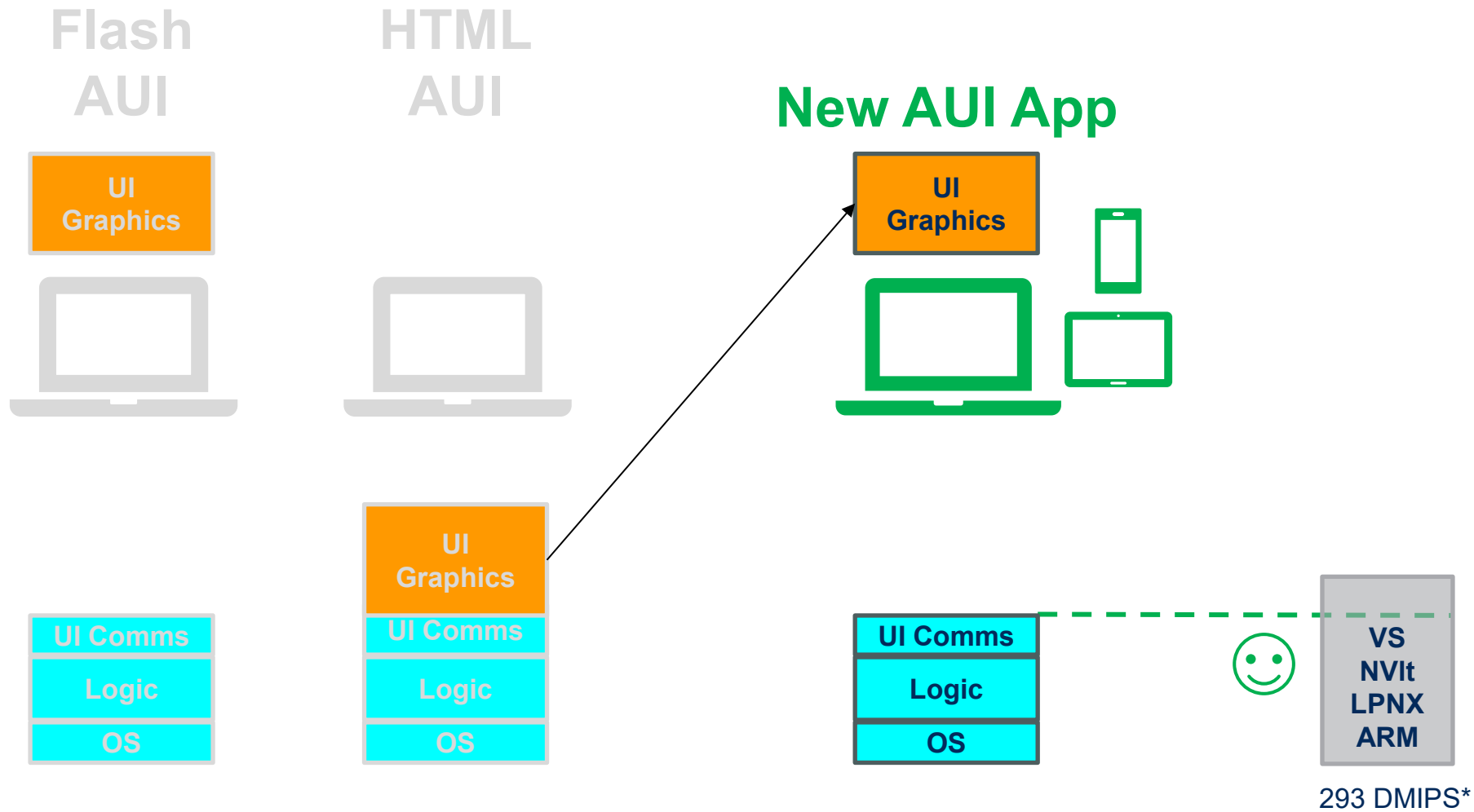


# New AUI: VS/NVIt/LPNX ARM Processor Port



\*Dhrystone Million Instructions Per Second (GV rates about 24,000 DMIPS)

# New AUI: VS/NVIt/LPNX ARM Processor Port

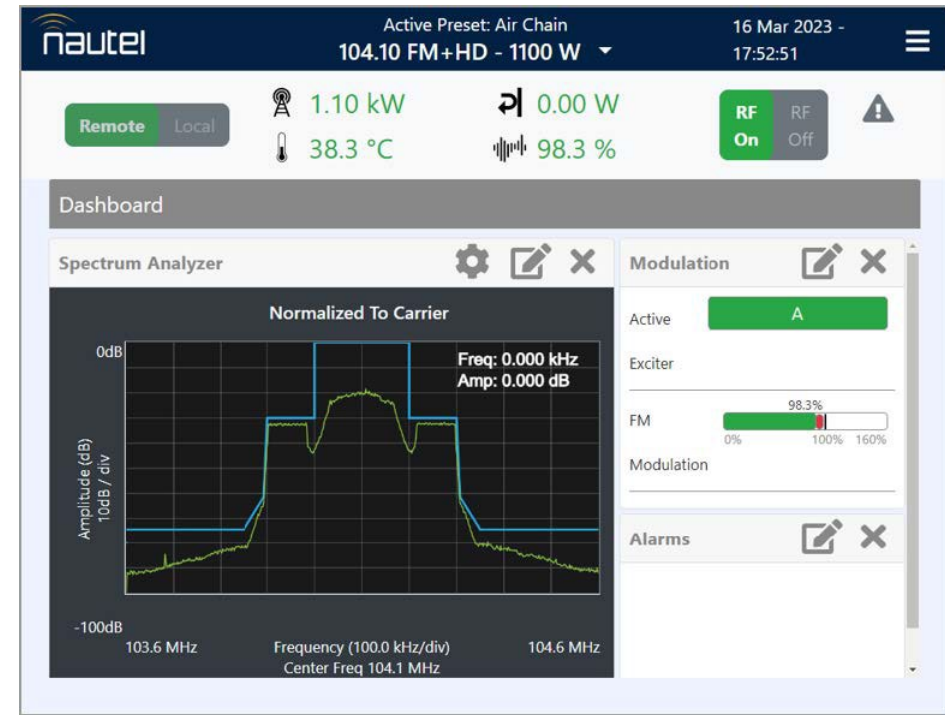


\*Dhrystone Million Instructions Per Second (GV rates about 24,000 DMIPS)

# The New AUI - Status 2026

- Robust code base
- Over 2000 of New AUIs in use
  - ✓ VX Series AUI
  - ✓ GV2 Series AUI
  - ✓ GV Series AUI
  - ✓ VS & NVLT Beta

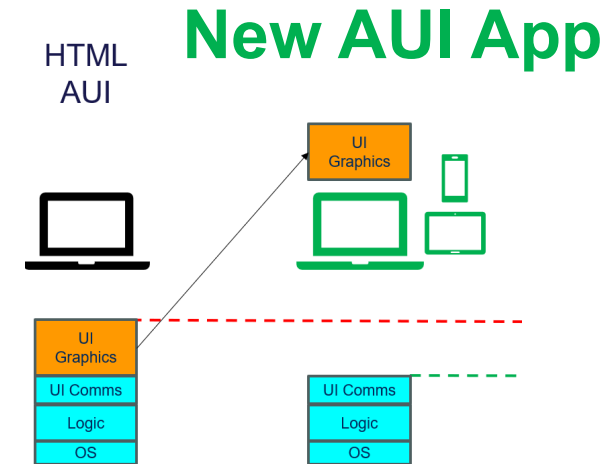
➔ Now: VS & NVLT



GV2 AUI Dashboard

# What is New AUI App?

- Web application with app-like experience
  - Runs on a web browser **but** can be installed on a user's home screen/desktop
  - Offline access, fast loading time
- What runs in Tx?
  - Audio, Networking, SNMP, Time Management
- What runs in the app
  - UI, Graphics, Drawing, Reports
- App sourced from:
  - Tx (if no Internet) or Cloud/Internet
  - App can be updated separate from the Tx

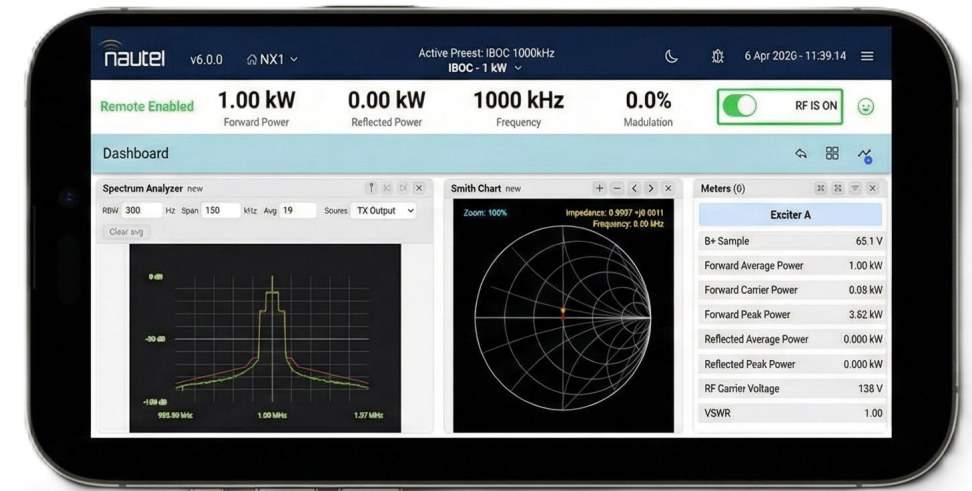


VS AUI Dashboard

Running live @ NAB show floor

# New AUI App Status & Controlled Roll-out

- VS and NVLT Beta Stage 1 Completed
- Initial implementation on NX at NAB
- What is happening Now:
  - Controlled Release Roll-out
    - VS AUI base functionality
    - NVLT AUI base functionality
- What's next...



NX1 AUI Dashboard

Running live @ NAB show floor

**NAB SHOW** Booth C2546 **nautel** Radio Technology Forum 8:30 am – 12:00 pm Sunday, April 19 Westgate Main Ballroom

# Follow-on releases:

- Agile & Streamlined path forward
  - VS full feature analog
  - NVLT full feature analog
  - NX Low-Med power (1 kW-10 kW)
  - NX High-power (15kw and greater)
  - VS HD, NV



Order may vary...goal is fastest path for the majority of users

# Why Staged Rollout/Controlled Release?



FASTER ACCESS,  
SOONER



CLEAR  
EXPECTATIONS  
UPFRONT



BEST  
EXPERIENCE

# Getting access to the App

VS, NVLT Staged Rollout/Controlled Release

- Base functionality:
  - Make sure it fits your needs.
- Sign up for access starts today
  - Earliest access for first signups
    - Early release anticipated 1<sup>st</sup> week of May
    - NVLT may follow the VS by a few days
  - Then over the next few weeks into May:
    - Ongoing/increasing access to the release
    - Users will receive email with download info

# What's included in the release?

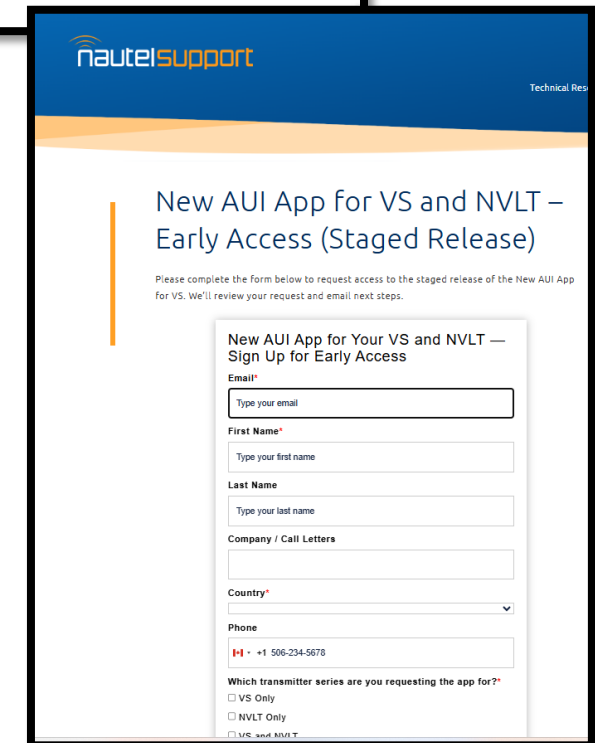
- ✓ Dashboard
- ✓ Presets management
- ✓ Preset Scheduler
- ✓ Network Management
- ✓ Time Management
- ✓ Alarms
- ✓ SNMP
- ✓ RDS
- ✓ File Upload to Onboard File System and USB Storage
- ✓ Reports
- ✓ Meters
- ✓ User Management
- ✓ Authorization & Authentication

# What's **not** in the 1<sup>st</sup> release & coming later :

- Orban support
  - Audio Player
  - HD Radio support
  - Remote I/O Configuration
    - Can still be done via Front panel
  - Email Notifications
- Also note:
    - One-way upgrade path
      - Downgrades not intended
    - SNMP MIB Changed
    - At least 10Mbps on-site bandwidth
    - USB Specs to be shared
    - Works on cellphone/tab
      - Not optimized (Future)

# How does the rollout work?

- Go to “Latest Software” page on Nautel Support  
[support.nautel.com/latest-software/](https://support.nautel.com/latest-software/)
- Click on “**Sign Up for Early Access**”
- Review form, pay careful attention to highlights
- Click “**Request Access**”
- Get a confirmation email after submission
- In coming days/weeks
  - You will receive an email with download details

A screenshot of the 'Sign Up for Early Access' form on the Nautel Support website. The form title is 'New AUI App for VS and NVLT – Early Access (Staged Release)'. Below the title, it says 'Please complete the form below to request access to the staged release of the New AUI App for VS. We'll review your request and email next steps.' The form fields include: 'Email\*' (with a placeholder 'Type your email'), 'First Name\*' (with a placeholder 'Type your first name'), 'Last Name' (with a placeholder 'Type your last name'), 'Company / Call Letters', 'Country\*' (a dropdown menu), 'Phone' (with a placeholder '+1 506-234-5678'), and 'Which transmitter series are you requesting the app for?\*' with radio button options for 'VS Only', 'NVLT Only', and 'VS and NVLT'.

# How to do the upgrade?

- Instructions will be provided via email
- Download Software onto a qualified USB
- Plug the USB into your VS/NVLT
- Initiate upgrade via front-panel
- Wait till the upgrade completes
  - Takes 30+ minutes. Do not interrupt.
- Watch for “upgrade successful” on front panel
- Log in to New AUI App

Download is free, but as an alternative a physical upgrade kit will be orderable for \$99 US



VS AUI Dashboard

# Demo: New AUI



# Summary:

- VS/NVLT
  - Sign Up for Early Access (Staged Release)
    - Today
  - Limited release starting
    - May 2026
  - Full analog release expected
    - Fall 2026
- Additional platforms, HD support to follow



VS AUI Dashboard

# Questions?

# Thank You!

[www.nautel.com](http://www.nautel.com)

