



# VX Series

## 150 W to 6 kW FM Analog Transmitters



### 11 VX Series Transmitters

- More power choices to fit your needs
- AUI: Secure, HTML5 Tx Control
- Instrumentation, RDS, SNMP, Presets
- Modular 3-6 kW for easy service & low weight
- 100% North American: Design, Build, #1 Support
- Rigorous testing and quality assurance
- Long service-life design
- 4 year warranty

Compact • Efficient • Affordable



# IBC 2024 GUIDE 8.D70

## World's Largest AM/FM Transmitter Manufacturer

- 5 Decades of Consistent Ownership
- 55 Years of Innovation
- #1 Exceptional Customer Support

- 35 Megawatts of NX Series Deployed
- 20,000+ Transmitters Shipped

1

# VX Series

150 W to 6 kW FM  
Analog Transmitters



## VX Series

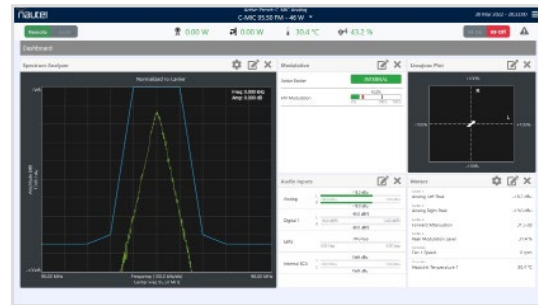
Compact, Efficient, Affordable. 11 analog FM transmitters with outputs of 150 W to 6 kW. The VX Series offers advanced control and instrumentation in a compact footprint with state-of-the-art DSP, power supply, and FET technology.



2

## AUI: Advanced User Interface

A totally rewritten AUI with an all-new operating system and architecture that will be standard on all new Nautel transmitters.



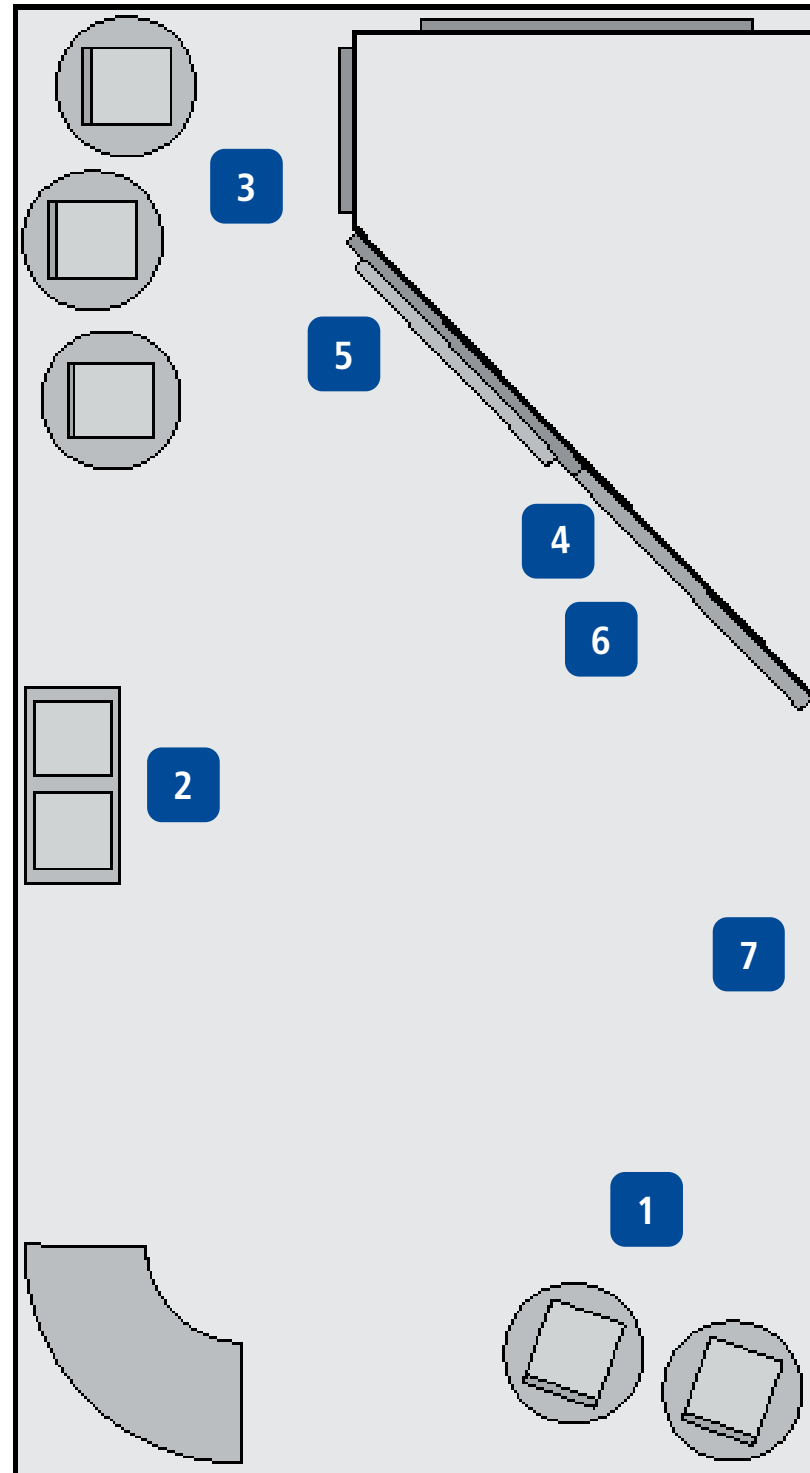
3

## Digidia SpanFM and SyncFM

Perfect synchronous FM. Field proven: successfully deployed in France (over 200 sites) and Japan (over 50 sites).



## Booth Guide: 8.D70



4

## VX Series Main/Standby & N+1

Looking for the ultimate On-Air dependability? Learn more about the SC4 Main/Standby controller from Nautel. This SNMP-based system controller is pre-configured for Nautel transmitters and is available in Main/Standby and N+1 configurations.

5

## NVLT Series

Affordable transmitters for analog/digital FM broadcasting. Based on a proven architecture, the NVLT Series is built tough with, parallel power amplifiers, parallel power modules and hot-swap power supplies.



6

## NX Series featuring MDCL power savings

Current MDCL modes can create power savings significant enough to pay back the medium wave transmitter purchase in as little as 3-5 years.



AM Savings Calculator



7

## GV<sup>2</sup> Series

Engineered using Nautel's field-proven Binary-combined high-power architecture, GV<sup>2</sup> transmitters offer the industry's highest digital power outputs, commercial-grade instrumentation, advanced intelligent features, and award-winning control via Nautel's AUI. 3.5 kW – 80 kW FM.

