



Jeff Welton

Sales Manager, Central USA
Nautel



Shane Toven

Senior Broadcast Engineer
K-LOVE & Air1 Media Networks



Episode #89

Transmitter Site Considerations Part 1

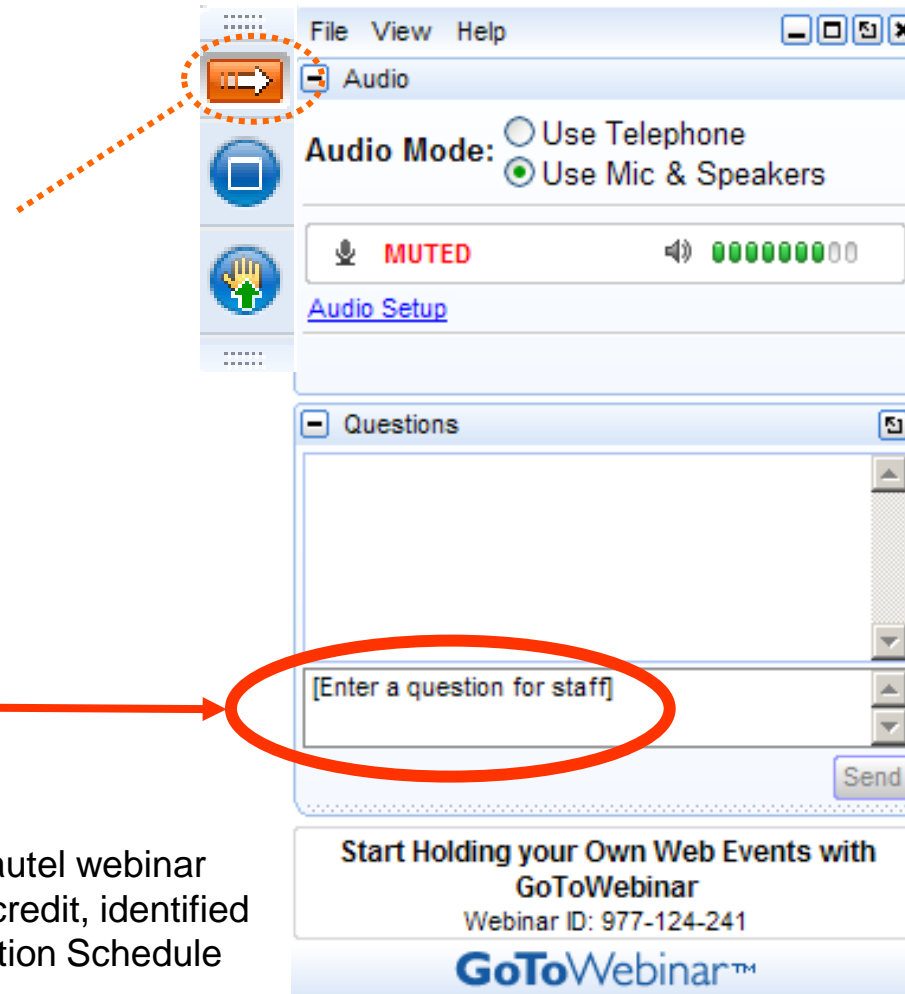
Your questions please?

(if you don't see the control panel,
click on the orange arrow icon to
expand it)

Please enter your questions in the
text box of the webinar control panel
(remember to press send)



Remember: The completion of a Nautel webinar qualifies for ½ SBE re-certification credit, identified under Category I of the Re-certification Schedule for SBE Certifications.



Silvio	Recommendations, when the environmental conditions to install transmission equipment in places of high humidity, places with the
Benjamin	In 1998, the Lord God led me to design, construct, & adjust a 50-to-300_Ohm-UnBal_Line_Matchng_Ntwrk_for_FEBC's Nautel XL60Tx.
Bill	Ambient temperature control. Lots there I think. Newer transmitters - more efficient, less heat. Are heat pumps enough? Etc
Engr. Egena	Is it possible for Nautel to provide us her customers with stimulation kit to focast coverage area.
Eric	What's the ideal way to figure out which equipment to order 1st, 2nd, 3rd... when spec-ing a combined frequency site?
Andy	Recent damage to feedline from recent storm, how to best patch rubbing down to copper core.
William	Suggest you include information on RF power monitoring solutions other than what is built into the transmitter

Agenda

- Grounding
 - How is it, should anything be improved?
- Antennas
 - VSWR, leaks, gain, right bay count?
- Lines
 - VSWR, leaks (check associated dehydrators/N tanks)
- Filters/combiners
 - Heat, reject load power, any transmitter anomalies
- Electrical
 - Surge protection, breaker temps, generator xfer switch

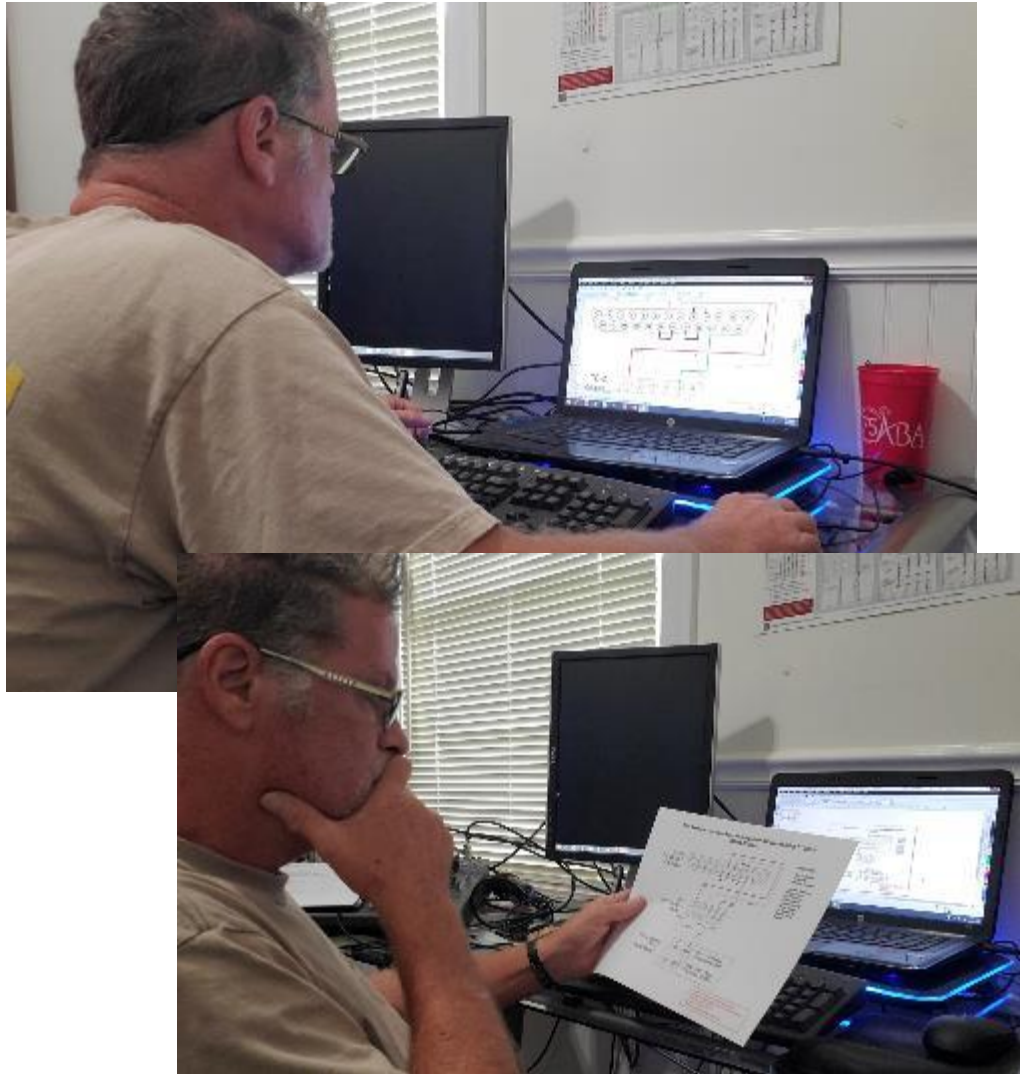
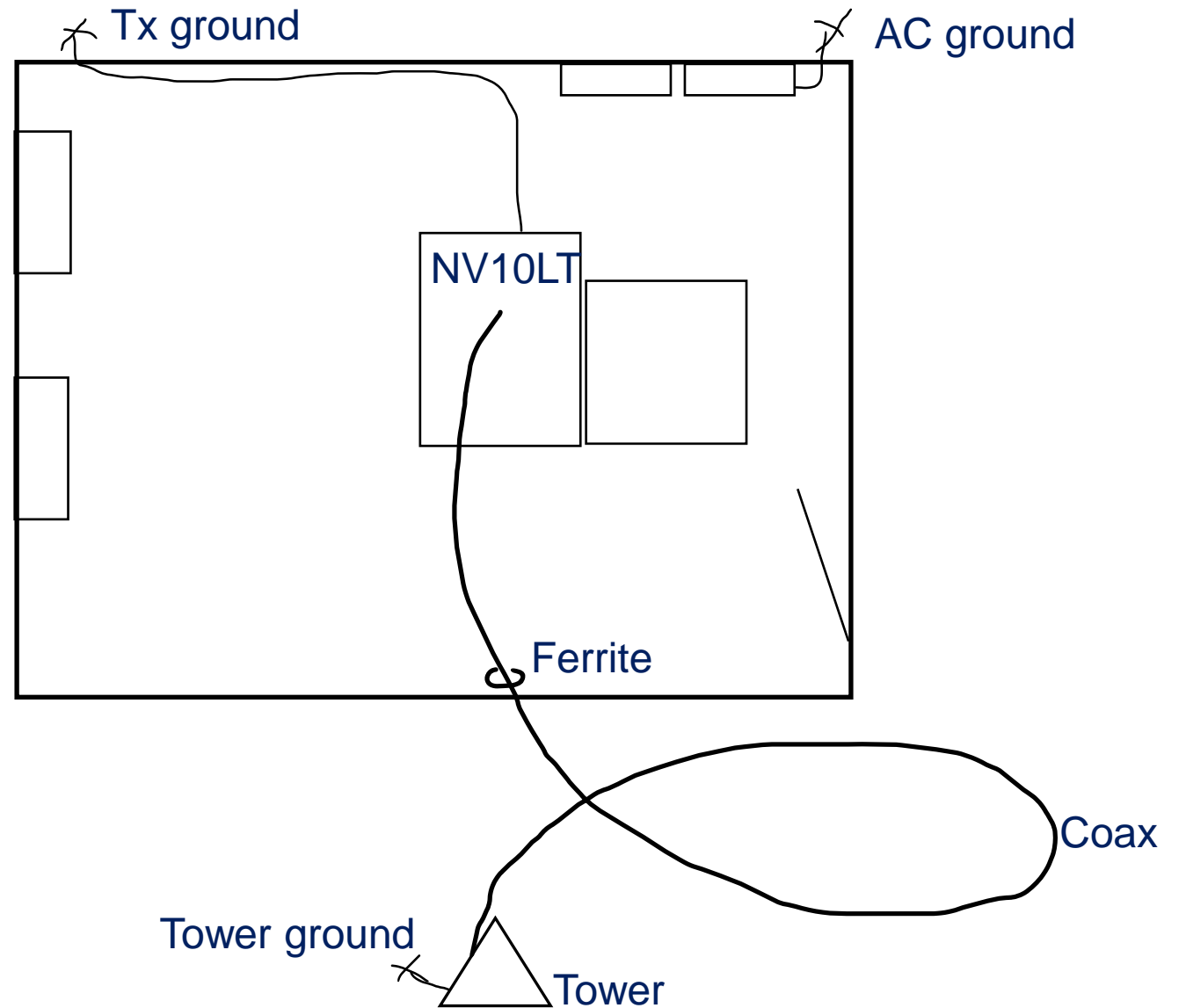


Photo credit: Dan Gunter, Alabama Broadcast Services, Opelika, AL







When it all goes awry...



When it all goes awry...

