



Jeff Welton

Sales Manager, Central USA

Nautel



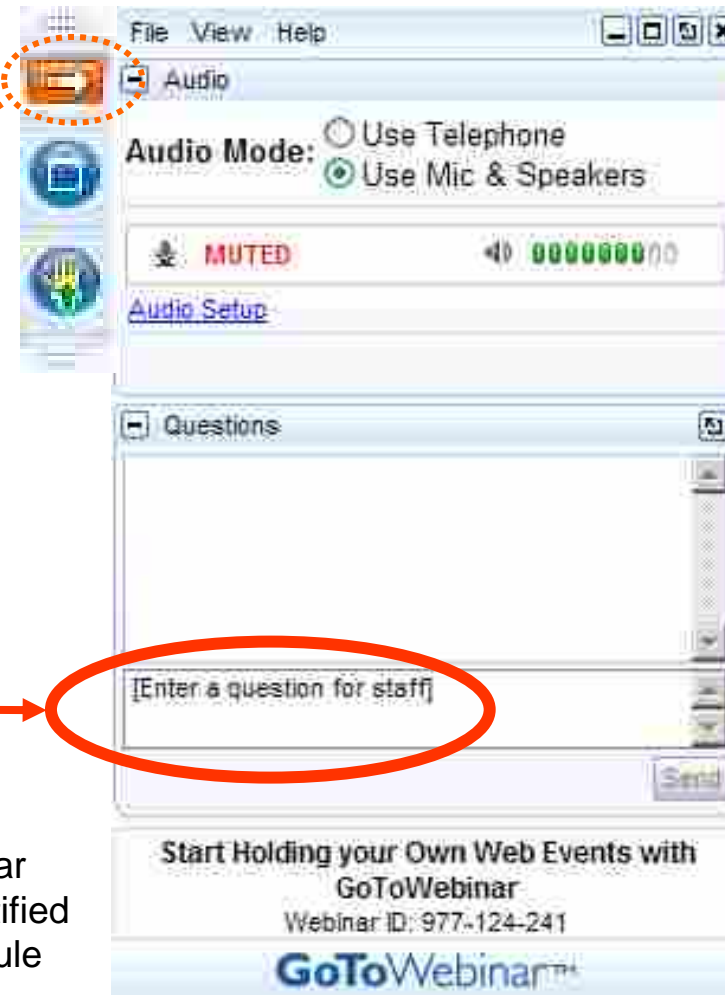
Episode #77

Site Stories

Your questions please?

(if you don't see the control panel, click on the orange arrow icon to expand it)

Please enter your questions in the text box of the webinar control panel (remember to press send)



Remember: The completion of a Nautel webinar qualifies for $\frac{1}{2}$ SBE re-certification credit, identified under Category I of the Re-certification Schedule for SBE Certifications.



Advance Questions

Burnt line connecting one filter to a combiner. Will send picture to Jeff.

How many of you have taken a spouse to a transmitter site with you? Did they all swear they would never go back?

Working adjacent to an unofficial shooting range. 3 tower dogleg required constant re-lamping, if you were brave.

What do you do when the owner gives the sister stations brand new stuff and you can't even get the grass cut at your sites?

Thought I was going to make it to a site on the last day before an incoming winter storm...TOO LATE!
(story...)

I remember the fun of getting a transmitter up a stair case. 40 years it would have been a lot easier with todays transmitters



Burnt line connecting one filter to a combiner.



How many of you have taken a spouse to a transmitter site with you?

[Dashboard](#) / [Safety SOPs](#)

Safety Section 4 - Electrical Workplace Safety

Created by Craig Kelly, last modified on Aug 07, 2019

Status: 07 August 2019

Contact: Electrical Safety Committee

Approval: President, COO, Head of Operations, Head of Engineering, HR Manager

Release: ██████████

Contents

- [Scope](#)
- [References](#)
 - [Normative References](#)
 - [Informative References](#)
- [Definitions](#)
 - [Arc Flash Hazard](#)
 - [Arc Flash Hazard Analysis](#)
 - [Arc Flash Boundary](#)
 - [Arc Rating](#)
 - [Electrical Hazard](#)
 - [Electrically Safe Work Condition](#)
 - [Energized Work](#)
 - [Exposed Electrical Conductor](#)
 - [Incident Energy](#)
 - [Lockout Device](#)



How many of you have taken a spouse to a transmitter site with you?

7.6 Lone Worker Safety

1. Purpose

To establish a procedure to ensure that employees engaged in hazardous activities do not work alone, this includes when working overtime and on weekends.

2. Scope

This policy covers all Nautel employees who work at the Hackett's Cove facility. In addition, visitors, vendors, contractors, and sub-contractors are also covered.

3. Policy

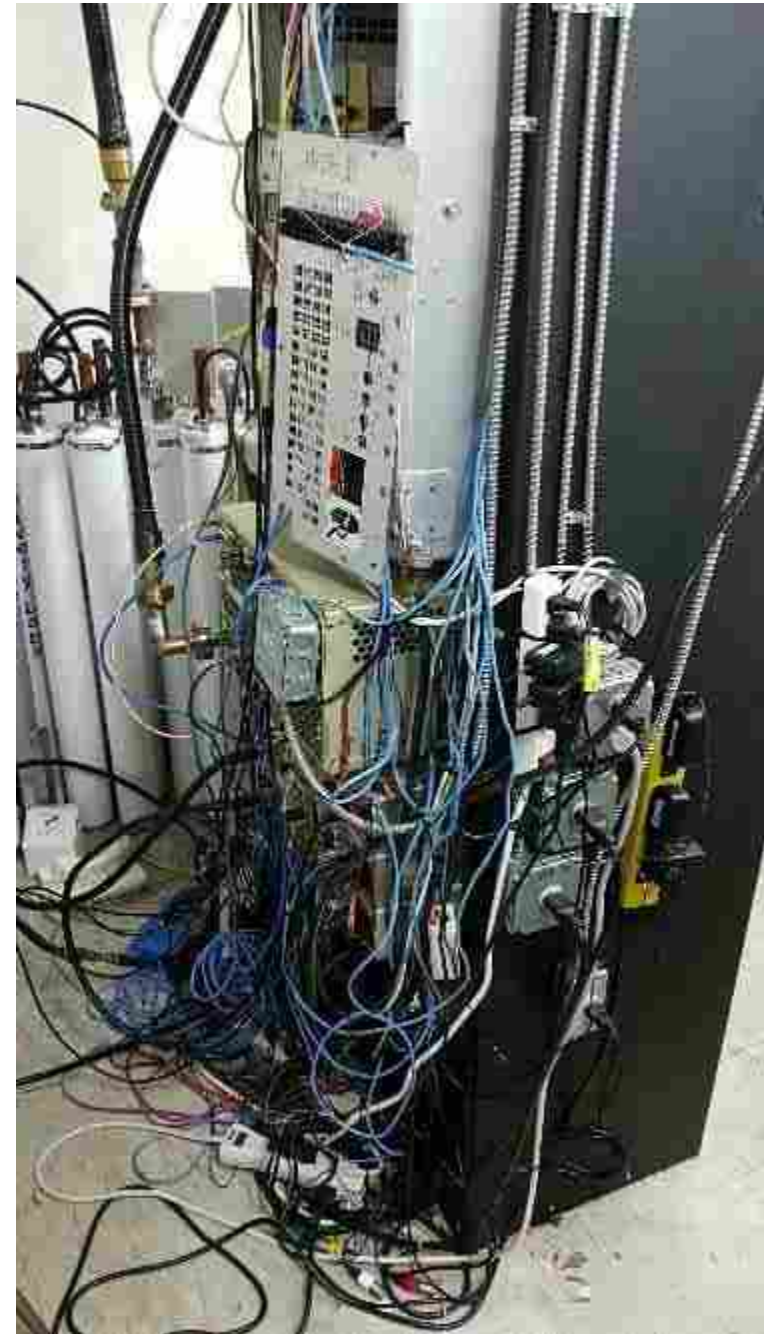
When a worker is engaged in any hazardous activity or working in hazardous areas, there must always be another person in the vicinity (within sight *or* hearing distance, or within the same general area of the facility).

The following activities are considered hazardous activities/physical plant areas:

- Energized Electrical Work (see Safety Section 4 - Electrical)
- Work in Plating shop;
- Work in Paint Shop (note in this instance, that the definition of within sight or hearing distance should be interpreted to mean that painting can take place provided there are workers within the main Fabrication area of the building due to the alarm system from the Paint Shop sounding in this area in case of emergency);
- Work in Carpentry Shop (located in outside building);
- Work on machinery in paint shop warehouse;



Cable Management



Cable Management



Working adjacent to an unofficial shooting range



Jordan Tomlinson

3 · d · 🌐



Huh, one of my tower lights shattered. I wonder what happened?

reassembles the pieces Oh, yep.



What do you do when the owner gives the sister stations brand new stuff and you can't even get the grass cut?



Good Engineering Practices



Thought I was going to make it to a site on the last day before an incoming winter storm



I remember the fun of getting a transmitter up a staircase.



- Remember details like:
 - Can a truck get in the driveway without sinking?
 - Is a lift gate required and are there steps/railings in the way?
 - Stairs – if using a stair crawler, vertical clearance needs to be considered
 - Transmitter dimensions (crated and uncrated)
 - Doorways
 - Other equipment in the way

Online Information



Webinars

<https://www.nautel.com/resources/webinars/>



Nautel Waves Newsletter

<https://www.nautel.com/newsletters/>



YouTube

<http://www.youtube.com/user/NautelLtd>



Online Info, such as the Broadcasters' Desktop Resource

<https://www.thebdr.net/>



THANK YOU!

