



Jeff Welton

Sales Manager, Central USA
Nautel



Cam Eicher

SVP of Worldwide Sales
Telos Alliance



Kirk Harnack

Senior Systems Consultant
Telos Alliance



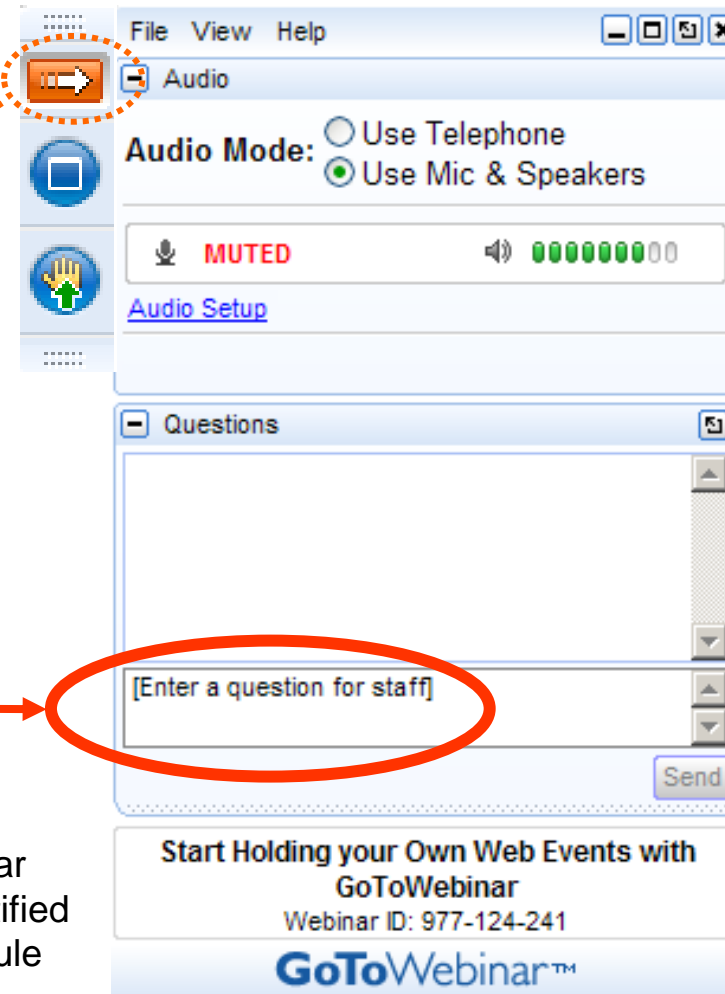
Episode #75

Virtualization and Containerization

Your questions please?

(if you don't see the control panel, click on the orange arrow icon to expand it)

Please enter your questions in the text box of the webinar control panel (remember to press send)



The screenshot shows a GoToWebinar control panel window. At the top, there is a menu bar with 'File', 'View', and 'Help'. Below the menu bar, there is a section for 'Audio' settings. An orange arrow icon is circled in red and has a dotted orange line pointing to it. The audio settings include 'Audio Mode' with two radio buttons: 'Use Telephone' (unselected) and 'Use Mic & Speakers' (selected). Below this, there is a 'MUTED' indicator with a microphone icon and a volume level indicator showing 00. A link for 'Audio Setup' is visible. Below the audio settings, there is a 'Questions' section. A text box with the placeholder text '[Enter a question for staff]' is circled in red, and a red arrow points to it. A 'Send' button is located to the right of the text box. At the bottom of the control panel, there is a promotional banner for GoToWebinar with the text 'Start Holding your Own Web Events with GoToWebinar' and 'Webinar ID: 977-124-241'.



Remember: The completion of a Nautel webinar qualifies for $\frac{1}{2}$ SBE re-certification credit, identified under Category I of the Re-certification Schedule for SBE Certifications.

Advance Questions

Updating the internet software in the AM transmitters 5, 10, 50 kW

How do I set up RDS for the VS300 LPFM transmitter?





The Broadcasting Club

Shane Toven ★ Favourites · 1 d · 🧑

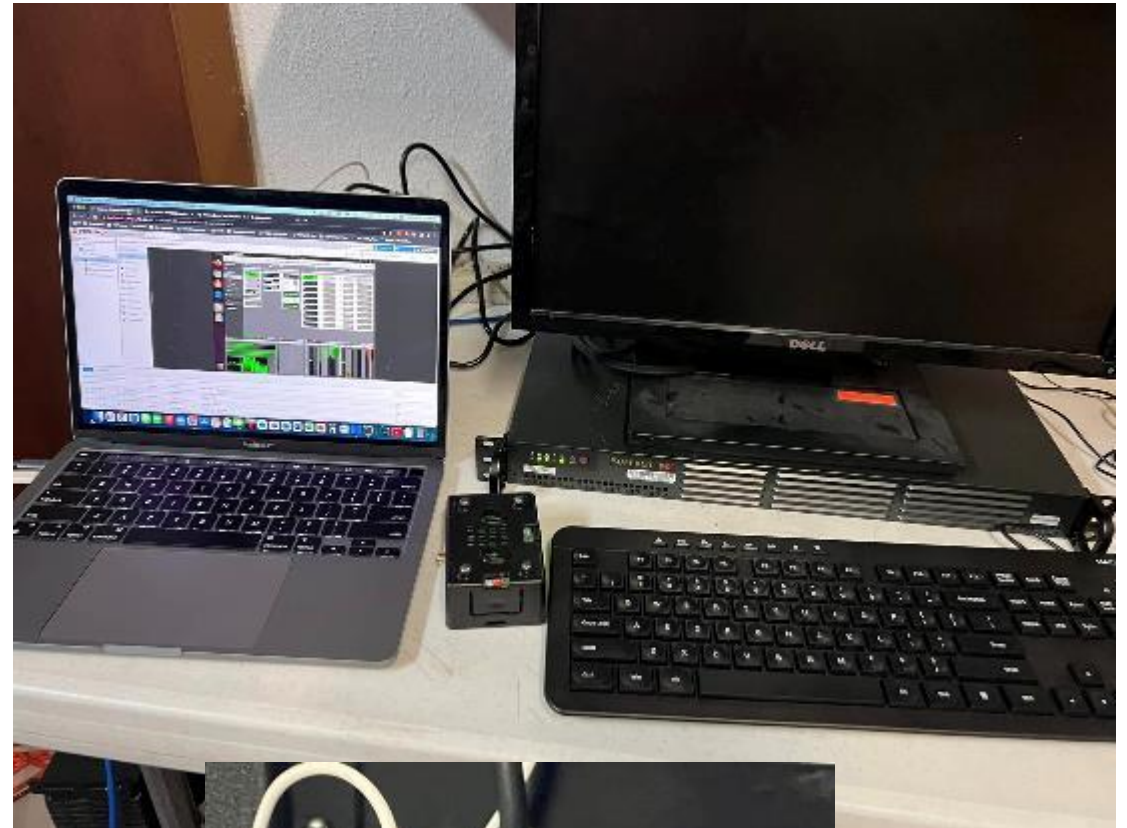


It's ALIVE! Not a single audio card in sight other than the DAC on this Raspberry Pi. Livewire in, MicroMPX out. Virtualization is a beautiful thing. Heck, with the Nautel VS1 I can even run MPX over AES finally making it a digital chain all the way from microphone to modulator! 😊

"But it's a computer!" And??? 30 seconds to reboot just the audio processing instance, less than 2 minutes from a total cold boot of the whole system for everything to come up. If your software gets hosed? Just roll back to the last good snapshot without missing a beat. Need more CPU, RAM, or drive space on a virtual machine? Go for it! Spread around as much as you have available however you need to. With the right hardware platform, you can lose hard drives, lose a power supply, or even an entire motherboard and stay on the air! This stuff WORKS.

Thanks to [Alex Hartman](#) and [Aaron Cox](#) for the inspiration, [Hans van Zutphen](#) for his amazing StereoTool and MicroMPX software, [Matt Levin](#) for his awesome presets, [Kirk A. Harnack](#) and the Telos Alliance for their contributions in codecs, audio processing and in taking virtualization technology mainstream in radio broadcasting, and special thanks to [Tony Scott Peterle](#) and Audemat for their contributions on so many fronts in remote control and audio encoding. It's been years in the making and there is still some refining to do, but this is finally starting to look like what was envisioned years ago as a "station in a box".

<https://www.facebook.com/groups/thebroadcastingclub/posts/3140008766254427>



What is “Virtualization”?

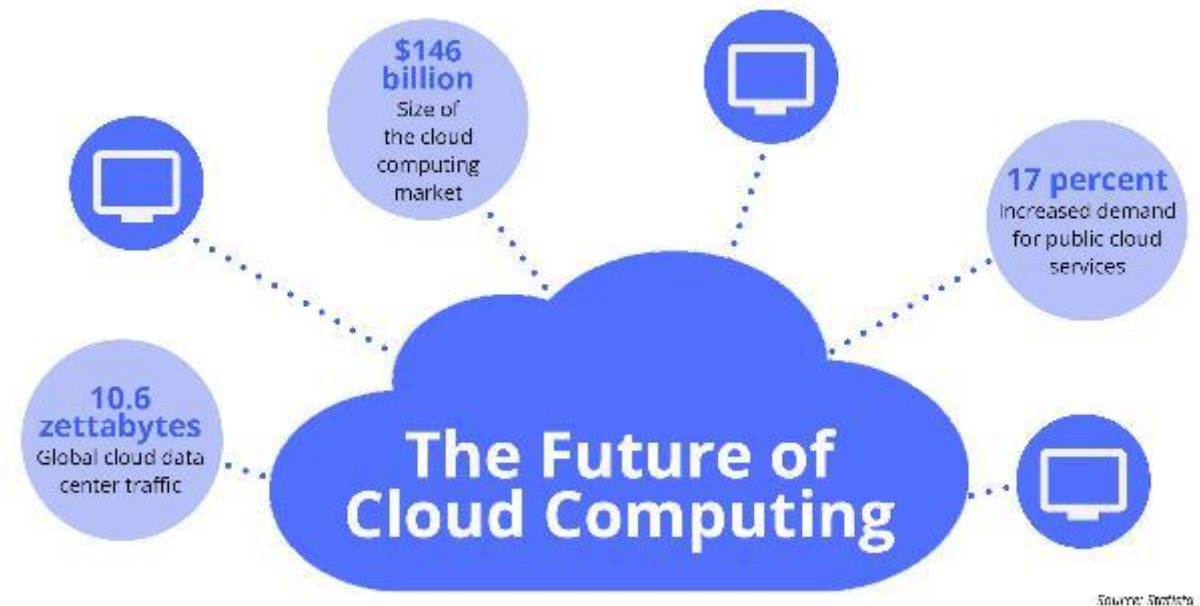
- What is virtualization?
 - Virtualization uses software to create an abstraction layer over computer hardware that allows the hardware elements of a single computer—processors, memory, storage and more—to be divided into multiple virtual computers, commonly called virtual machines (VMs). Each VM runs its own operating system (OS) and behaves like an independent computer, even though it is running on just a portion of the actual underlying computer hardware.

(source: <https://www.ibm.com/cloud/learn/virtualization-a-complete-guide>)

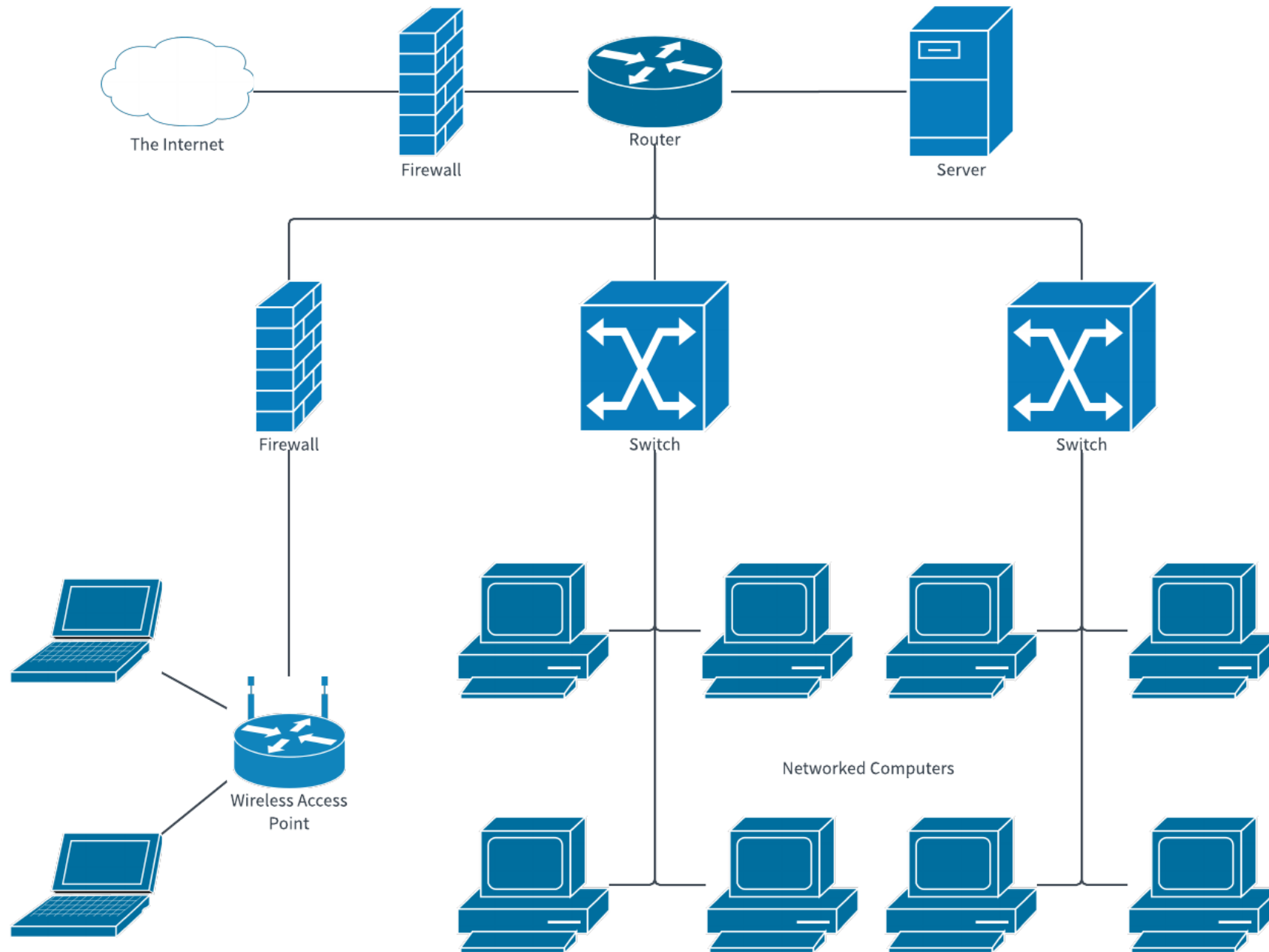


What is the “Cloud”?

- Virtualization vs Cloud based
 - Public cloud vs private
 - VMWare vs private server
 - On premises vs off prem
 - Security thoughts?
 - Redundancy discussion
 - How reliable is six 9s reliability if a backhoe cuts the fiber?



Source: <https://www.westagilelabs.com/blog/cloud-computing-is-the-future-of-enterprise-application-platform/>



Open Ports

80

443

4443

8009

8081

10443

51235

55553

Open Ports

80

1194

1723

4545

5900

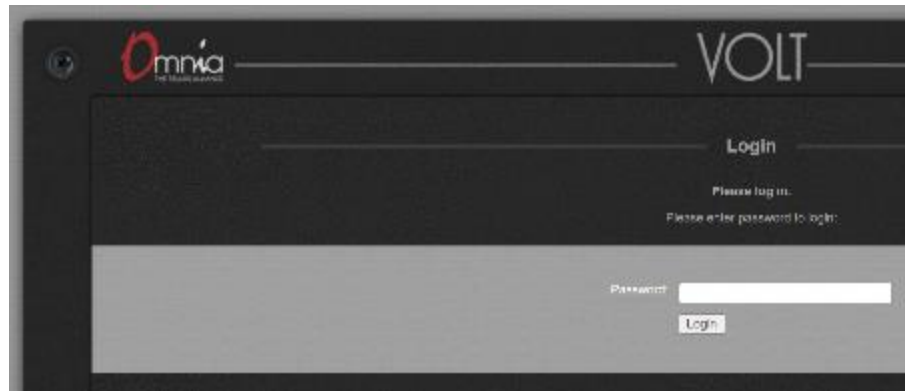
8080

8088

9000

9001

9002



Online Information



Webinars

<https://www.nautel.com/resources/webinars/>



Nautel Waves Newsletter

<https://www.nautel.com/newsletters/>



YouTube

<http://www.youtube.com/user/NautelLtd>



Online Info, such as the Broadcasters' Desktop Resource

<https://www.thebdr.net/>

THANK YOU!

