



**Jeff Welton**  
Sales Manager, Central USA  
Nautel



**Mike Patton**  
President  
Michael Patton and Associates



Episode #68

# Care & Feeding of Your AM Array

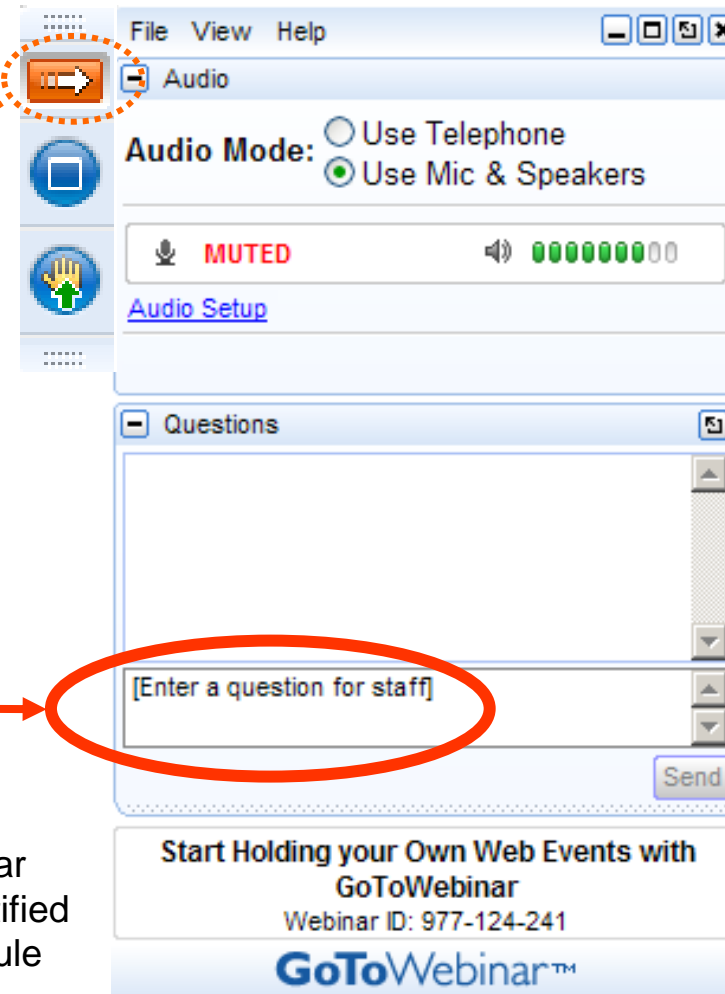
# Your questions please?

(if you don't see the control panel,  
click on the orange arrow icon to  
expand it)

Please enter your questions in the  
text box of the webinar control panel  
(remember to press send)



Remember: The completion of a Nautel webinar qualifies for ½ SBE re-certification credit, identified under Category I of the Re-certification Schedule for SBE Certifications.



# Advance Questions

Checklist for after a station acquisition (anonymous)

How to best/easiest way to splice broken thin copper strap from base of tower to ground system?  
How best to clean the copper.

When a monitor point becomes unusable due to environmental changes, what options are there besides running a new proof? MoM?

What the common signs of neglect you see at many AM sites and how can those issues be addressed?

What piece of test equipment is best to measure if there are breaks in my individual ground radials?

Then there is the fun topic of combining two or more signals on one am tower and how you can make those work well.

Looking for any practical way of testing grounding systems... What environments are worst for ground systems (sand vs wetland...)



# Due Diligence (things to look for)

- Cracked insulators or capacitors
- Loose radials or ground strap poking out of ground
- Water damage in building
- Missing pieces
- Tower integrity
- Guy wires and anchor points
- Groundskeeping
- Fencing
- Any obvious safety hazards

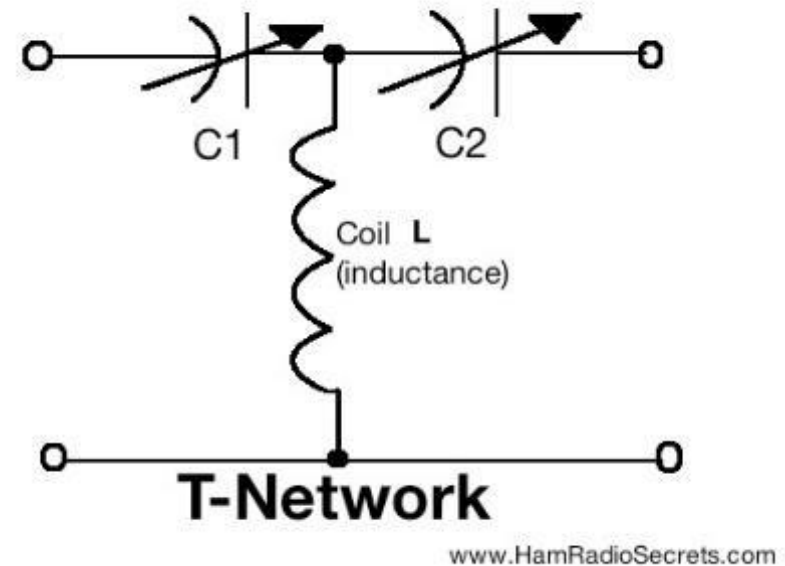
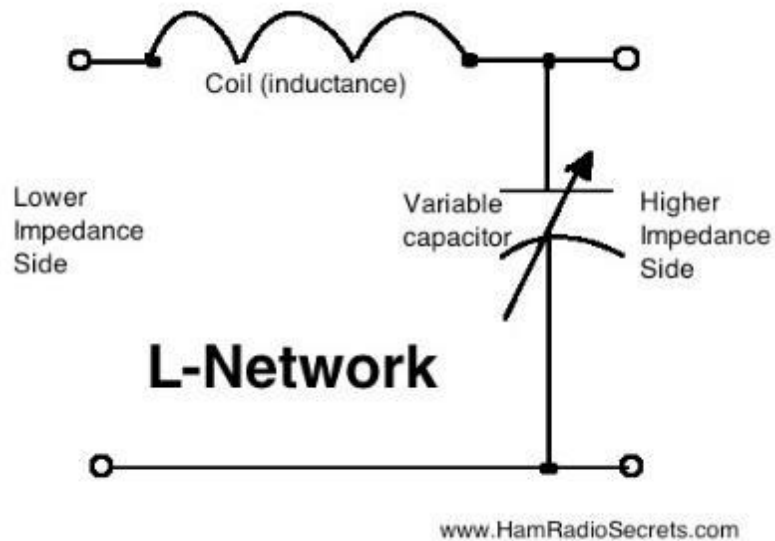




# Tuning Units and Ground Stability



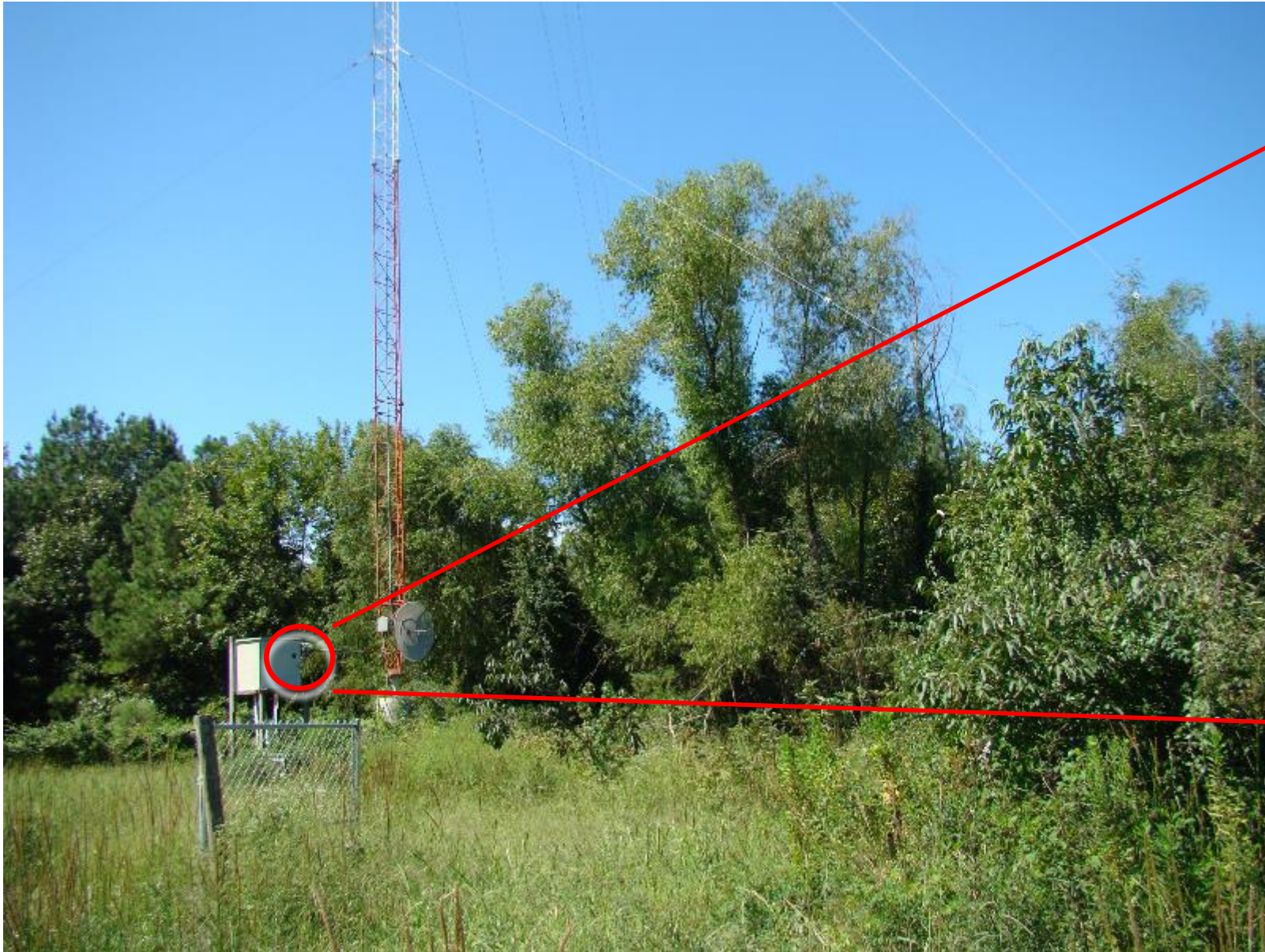
# Tuning Units and Ground Stability



<https://www.hamradiosecrets.com/homebrew-antenna-tuner.html>



# Tuning Units and Ground Stability





# Antenna Tuning

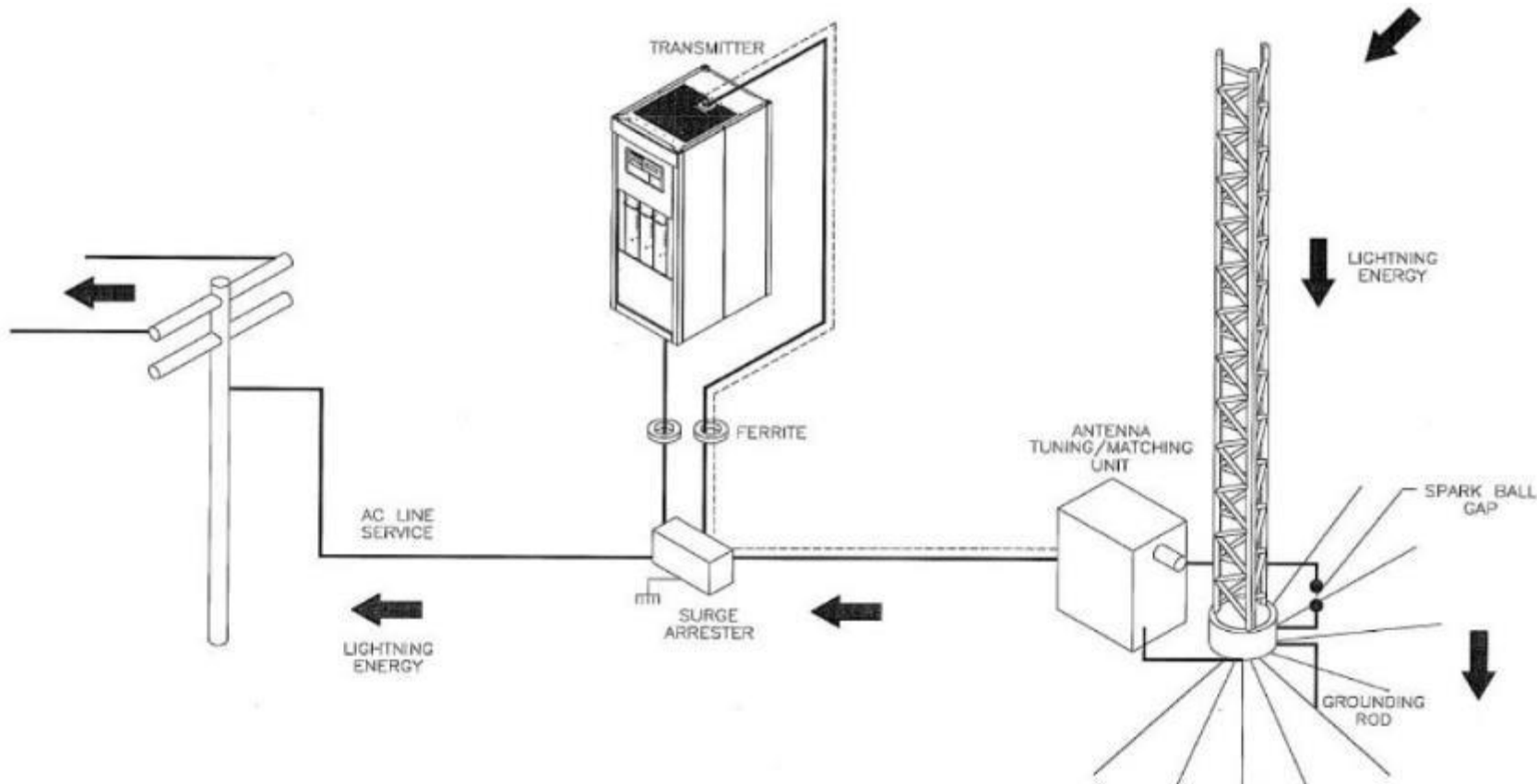
Tower Number	Field Ratio	Phase	Spacing
1	0.278	-87°	0°
2	0.55	-106°	214°
3	0.278	-125°	214°
4	0.506	19°	98°
5	1	0°	214°
6	0.506	-19°	214°
7	0.278	129°	196°
8	0.55	110°	214°
9	0.278	91°	214°

Tower Array Orientation





# Ground Radials



<http://www.hatdaw.com/downloads.html>

# General Maintenance





# General Maintenance









# Online Information



## **Webinars**

<https://www.nautel.com/resources/webinars/>



## **Nautel Waves Newsletter**

<https://www.nautel.com/newsletters/>



## **YouTube**

<http://www.youtube.com/user/NautelLtd>



## **Online Info, such as the Broadcasters' Desktop Resource**

<https://www.thebdr.net/>



# THANK YOU!

