



**Jeff Welton**

Sales Manager, Central USA  
Nautel



**Kevin Trueblood**

Associate General Manager  
WGBU Public Media



**Aaron Read**

IT & Engineering Director  
Rhode Island Public Radio



**Alex Hartman**

Broadcast Integration Specialist  
Wisconsin Public Radio



Episode #61

**IT Month**  
**Partitioning & General  
Security**

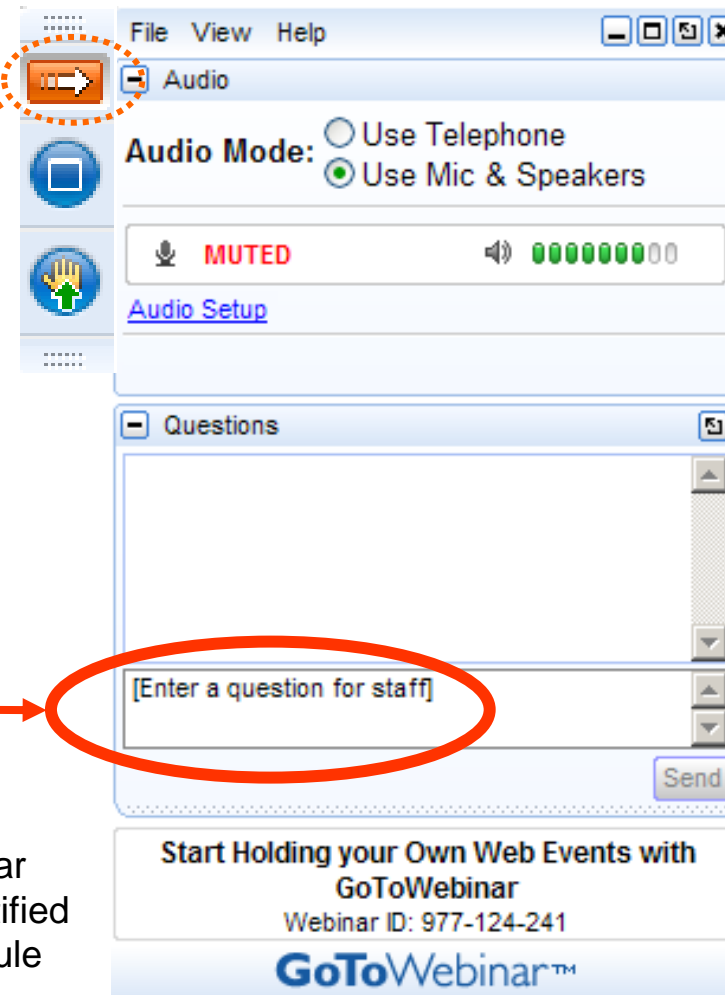
# Your questions please?

(if you don't see the control panel, click on the orange arrow icon to expand it)

Please enter your questions in the text box of the webinar control panel (remember to press send)



Remember: The completion of a Nautel webinar qualifies for ½ SBE re-certification credit, identified under Category I of the Re-certification Schedule for SBE Certifications.



# Ideas for things to cover

- Partitioning – subnets, multiple domains, public IP or private network?
- Router, switch, hub – what are the differences and why does it matter?
- Security
  - Firewalls
  - VPNs
  - Port Forwarding (what is it and why?)
  - Education
- Other items
  - Online courses/resources?

**Submit a question now and we'll do our best to answer it in the session. If you have a relevant story to share please tell us now and we'll contact you for more information.**

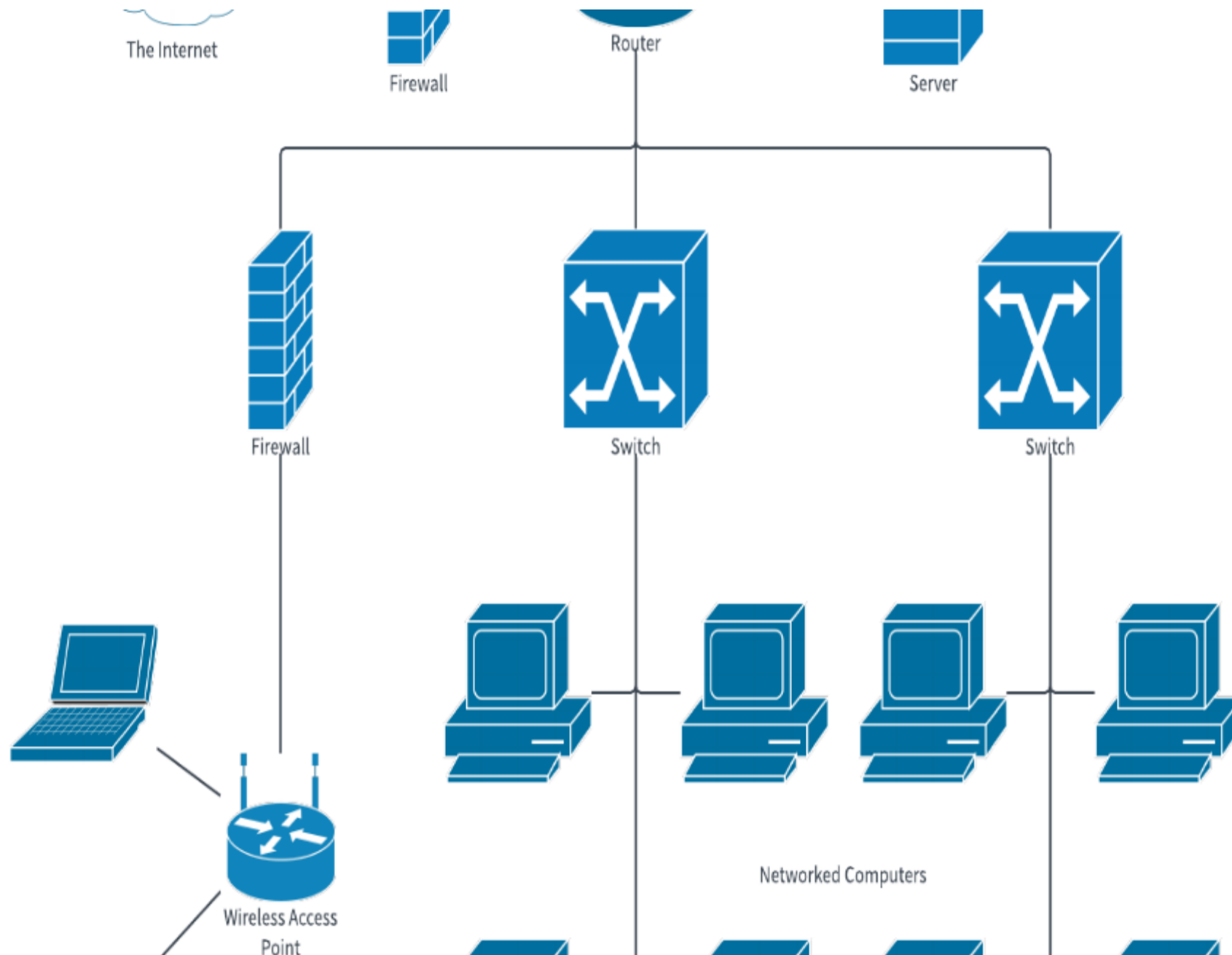
What's the opinion of simply copying radio mp3 ad from email to file server, vs playing via console to record it to automation.

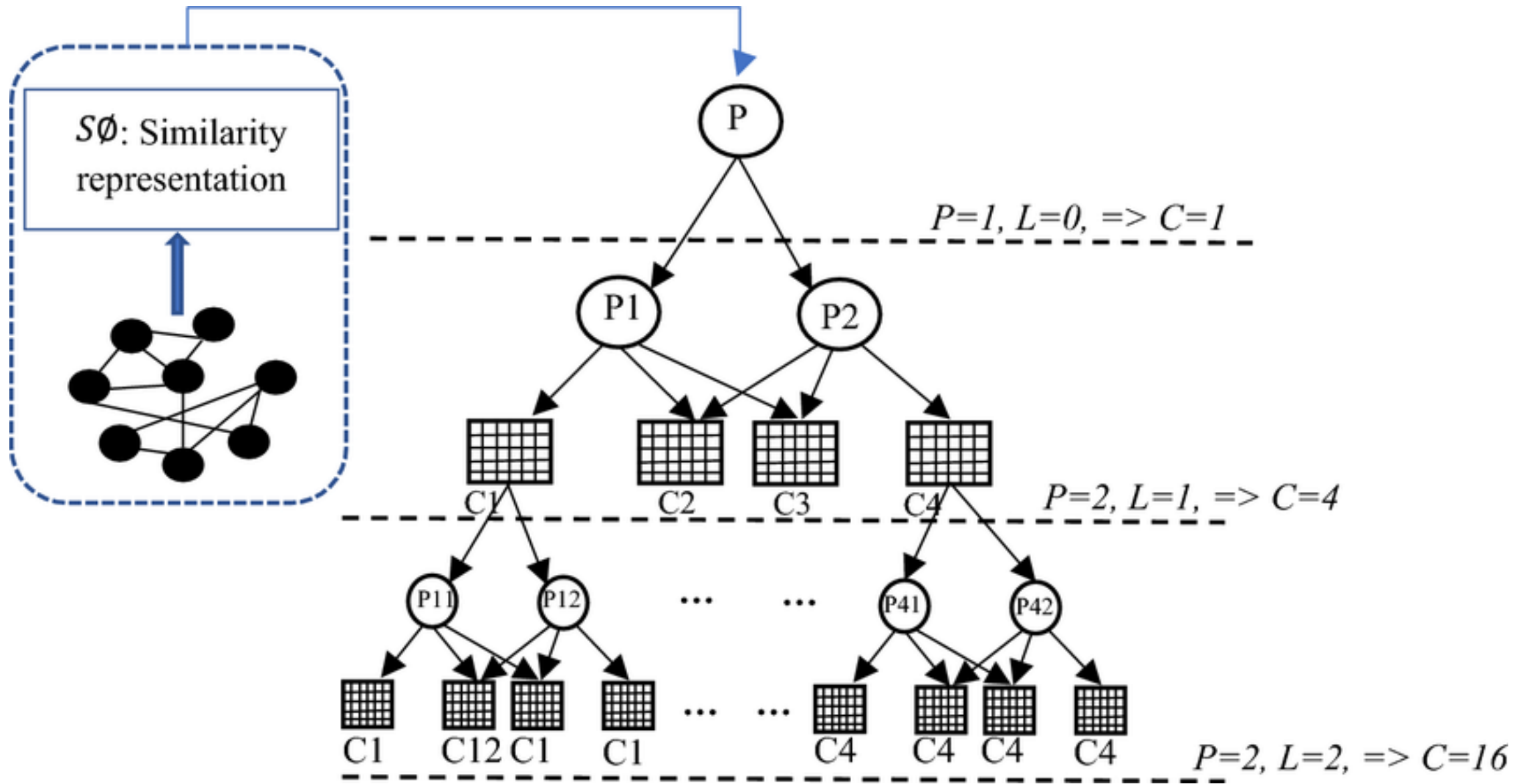
Will we get the option to select the html port for the GUI on the updated AUI interface?

what is the best software protection to load onto the pc's(Windows)

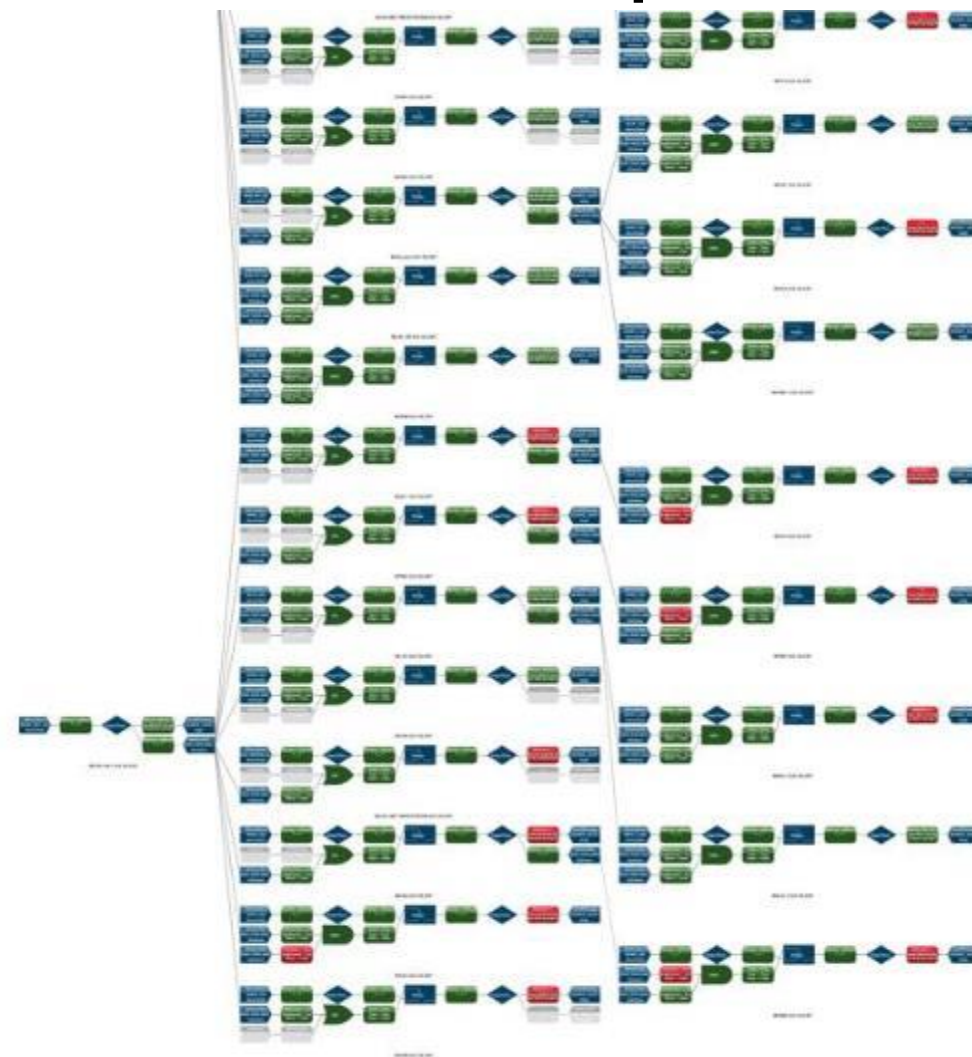
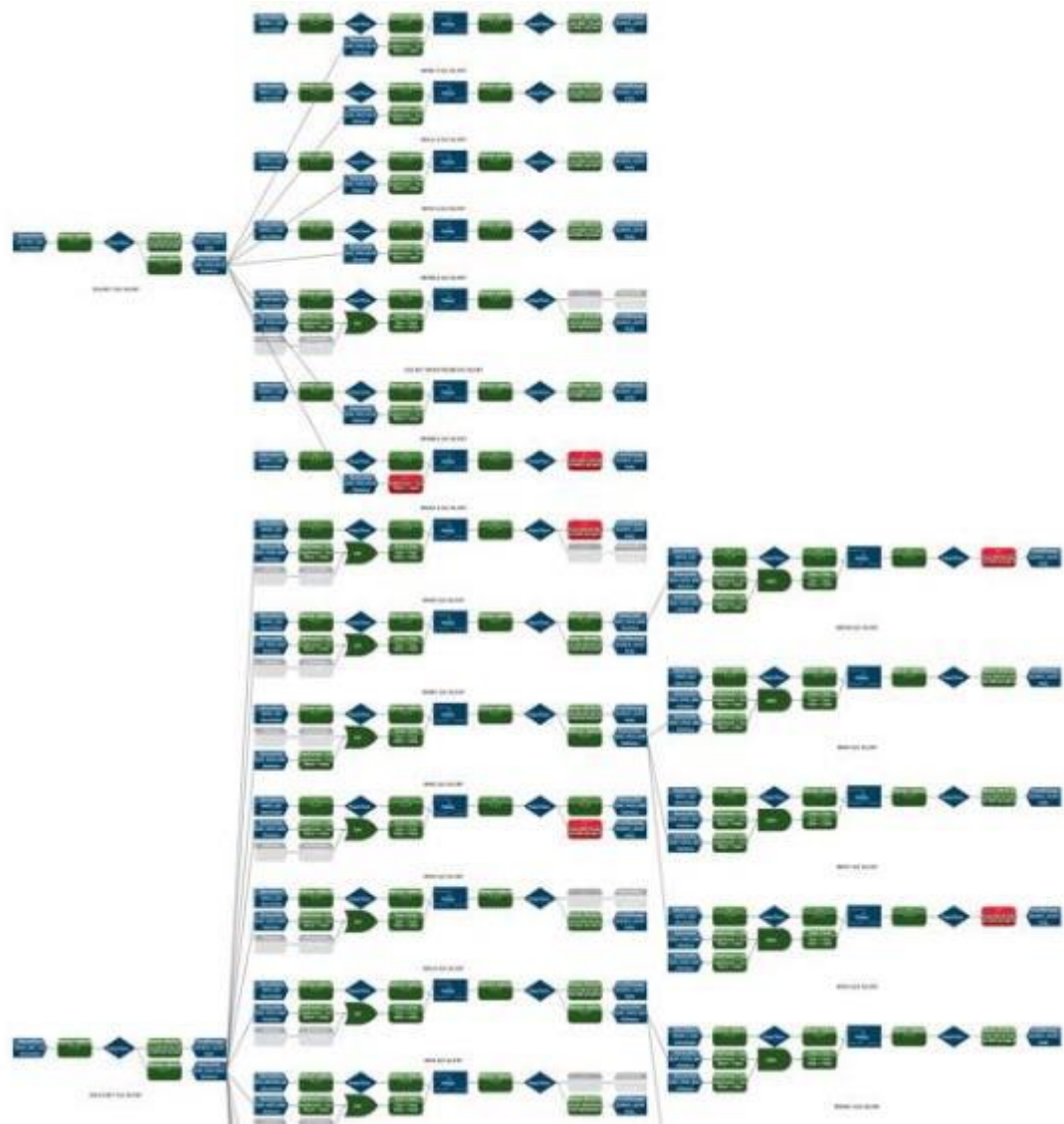
Practical examples of VLAN designs and traffic prioritization (especially when congestion occurs, e.g., due to loss of an ISP).













## RIPR IP Address Schema - public copy



File Edit View Insert Format Data Tools Add-ons Help

Last edit was made yesterday at 2:10 PM by Tech RIPR

100% \$ % .0 .00 123 Arial 10 B I S A

| A1 | Location     |        |    |           |                          |         |                 |                |                |   |
|----|--------------|--------|----|-----------|--------------------------|---------|-----------------|----------------|----------------|---|
|    | A            | B      | C  | D         | E                        | F       | G               | H              | I              | U |
| 1  | Location     | ISP    | IP | SUBDOMAIN | DESCRIPT                 | GATEWAY | MASK            | DNS1           | DNS2           |   |
| 2  | 1 Union Stn  | OSHEAN | 1  |           | ABS-managed Barracuda    | 17      | 255.255.255.240 | 158.188.148.71 | 158.188.148.72 |   |
| 3  | 1 Union Stn  | OSHEAN | 1  |           |                          | 17      | 255.255.255.240 | 71             | 72             |   |
| 4  | 1 Union Stn  | OSHEAN | 1  |           | iPort1US                 | 17      | 255.255.255.240 | 71             | 72             |   |
| 5  | 1 Union Stn  | OSHEAN | 1  |           | 89.3 IP Codec ETH0       | 17      | 255.255.255.240 | 71             | 72             |   |
| 6  | 1 Union Stn  | OSHEAN | 1  |           | 89.3 UMD BRIC Link II    | 17      | 255.255.255.240 | 71             | 72             |   |
| 7  | 1 Union Stn  | OSHEAN | 1  |           | 88.1 IP Codec            | 17      | 255.255.255.240 | 71             | 72             |   |
| 8  | 1 Union Stn  | OSHEAN | 1  |           | 102.7 IP Codec           | 17      | 255.255.255.240 | 71             | 72             |   |
| 9  | 1 Union Stn  | OSHEAN | 1  |           | No.PVD Bkup BRIC Link II | 17      | 255.255.255.240 | 71             | 72             |   |
| 10 | 1 Union Stn  | OSHEAN | 4  |           | Telos Z/IPstream webcast | 17      | 255.255.255.240 | 71             | 72             |   |
| 11 | 1 Union Stn  | OSHEAN | 1  |           | StudioB BRIC Link II     | 17      | 255.255.255.240 | 71             | 72             |   |
| 12 | 1 Union Stn  | OSHEAN | 1  |           | 89.3 HD2 BRIC Link II    | 17      | 255.255.255.240 | 71             | 72             |   |
| 13 | 1 Union Stn  | OSHEAN | 1  |           | Comrex Access            | 17      | 255.255.255.240 | 71             | 72             |   |
| 14 | 1 Union Stn  | OSHEAN | 1  |           |                          | 17      | 255.255.255.240 | 71             | 72             |   |
| 15 | 1110 Douglas | OSHEAN | 1  |           | 1290 WAN x3              | 129     | 255.255.255.240 | 71             | 72             |   |
| 16 | 1110 Douglas | OSHEAN | 1  |           |                          | 129     | 255.255.255.240 | 71             | 72             |   |
| 17 | 1110 Douglas | OSHEAN | 1  |           |                          | 129     | 255.255.255.240 | 71             | 72             |   |
| 18 | 1110 Douglas | OSHEAN | 1  |           |                          | 129     | 255.255.255.240 | 71             | 72             |   |
| 19 | 1110 Douglas | OSHEAN | 1  |           |                          | 129     | 255.255.255.240 | 71             | 72             |   |
| 20 | 1110 Douglas | OSHEAN | 1  |           |                          | 129     | 255.255.255.240 | 71             | 72             |   |
| 21 | 1110 Douglas | OSHEAN | 1  |           |                          | 129     | 255.255.255.240 | 71             | 72             |   |
| 22 | 1110 Douglas | OSHEAN | 1  |           |                          | 129     | 255.255.255.240 | 71             | 72             |   |
| 23 | 1110 Douglas | OSHEAN | 1  |           |                          | 129     | 255.255.255.240 | 71             | 72             |   |
| 24 | 1110 Douglas | OSHEAN | 1  |           |                          | 129     | 255.255.255.240 | 71             | 72             |   |
| 25 | 1110 Douglas | OSHEAN | 1  |           |                          | 129     | 255.255.255.240 | 71             | 72             |   |
| 26 |              |        |    |           |                          |         |                 |                |                |   |





▶ Listen Live

The  
Public's  
Radio

Local Stories ▶

Podcasts &  
Productions ▶

About ▶

Support ▶

Business  
Underwriting ▶

Search 🔍

Give Now



## Organizing Your Network

This is the big one. Each location gets a TP Link gateway/router (mostly [TL-R600VPN](#)'s, but those are being phased out in favor of the [ER605](#) that, on the one I've used so far, seems pretty much the same). Each gets a SFF desktop computer (with [UltraVNC](#) for remote control, since only UltraVNC natively supports encrypted passwords). And that computer gets a Chrome browser set up with access to the same Google Account that all my Sheets, Drive, Docs, etc so they all can access it as needed, quick and easy. Each gets a L2TP VPN set up that I can connect my iPhone to for VNC purposes. Each gets a Foscam R2E ptz webcam so I can look around if needed.

But most importantly, each site gets a worksheet in my Google Sheet "IP Address Schema".

All the transmitter sites are 192.168.xx0.yyy where the yyy octet is



I cannot possibly overstate the importance of having the tech support number, account number, and username/password (or PIN or whatever) for each ISP connection. When you're in the field, you'll *never* have the paper bill handy to refer to that stuff, and for many ISP's they require it. At least with Google Sheets you can call it up on your smartphone while on the call to tech support.

Aaron Read - <https://thepublicsradio.org/episode/theec-organizing-your-networks>



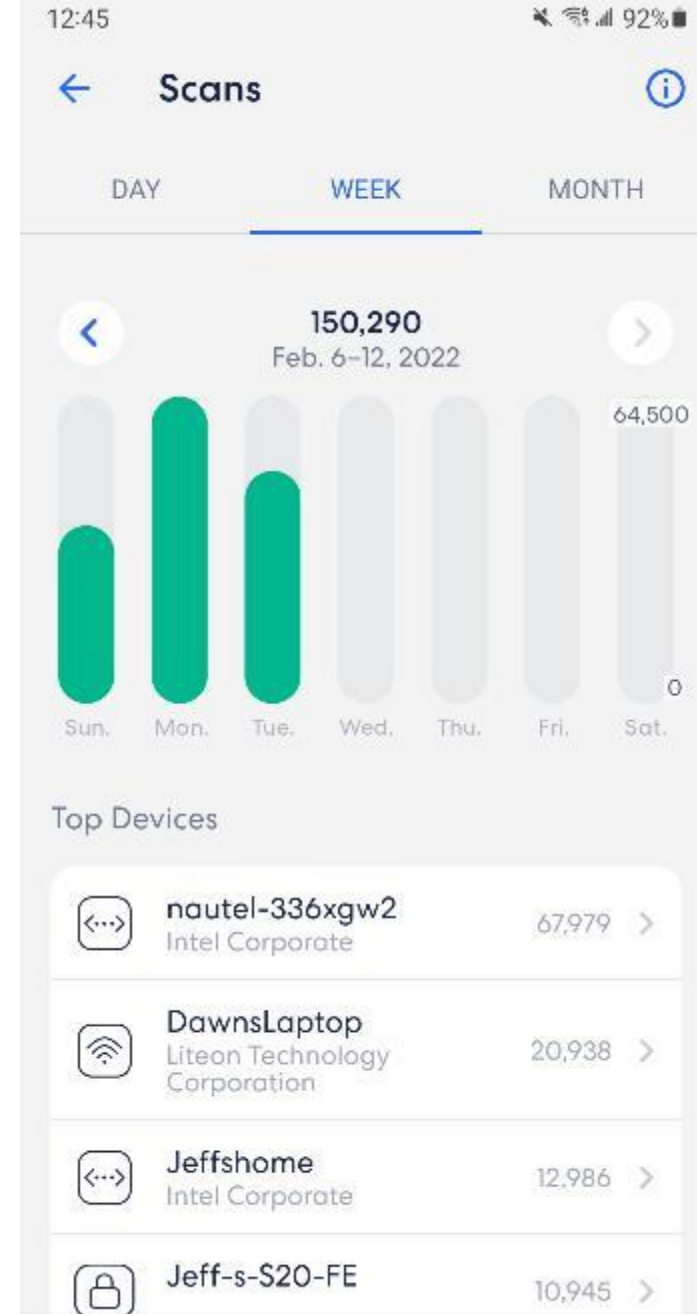
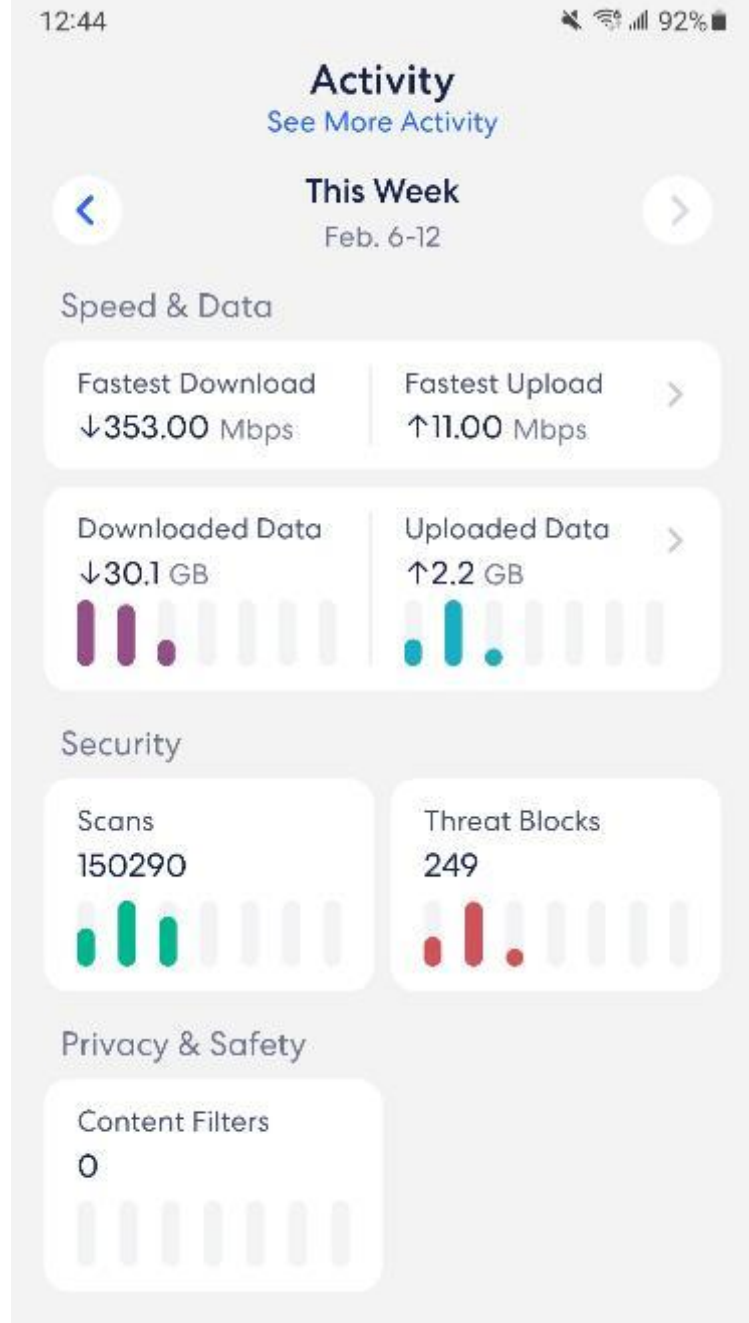


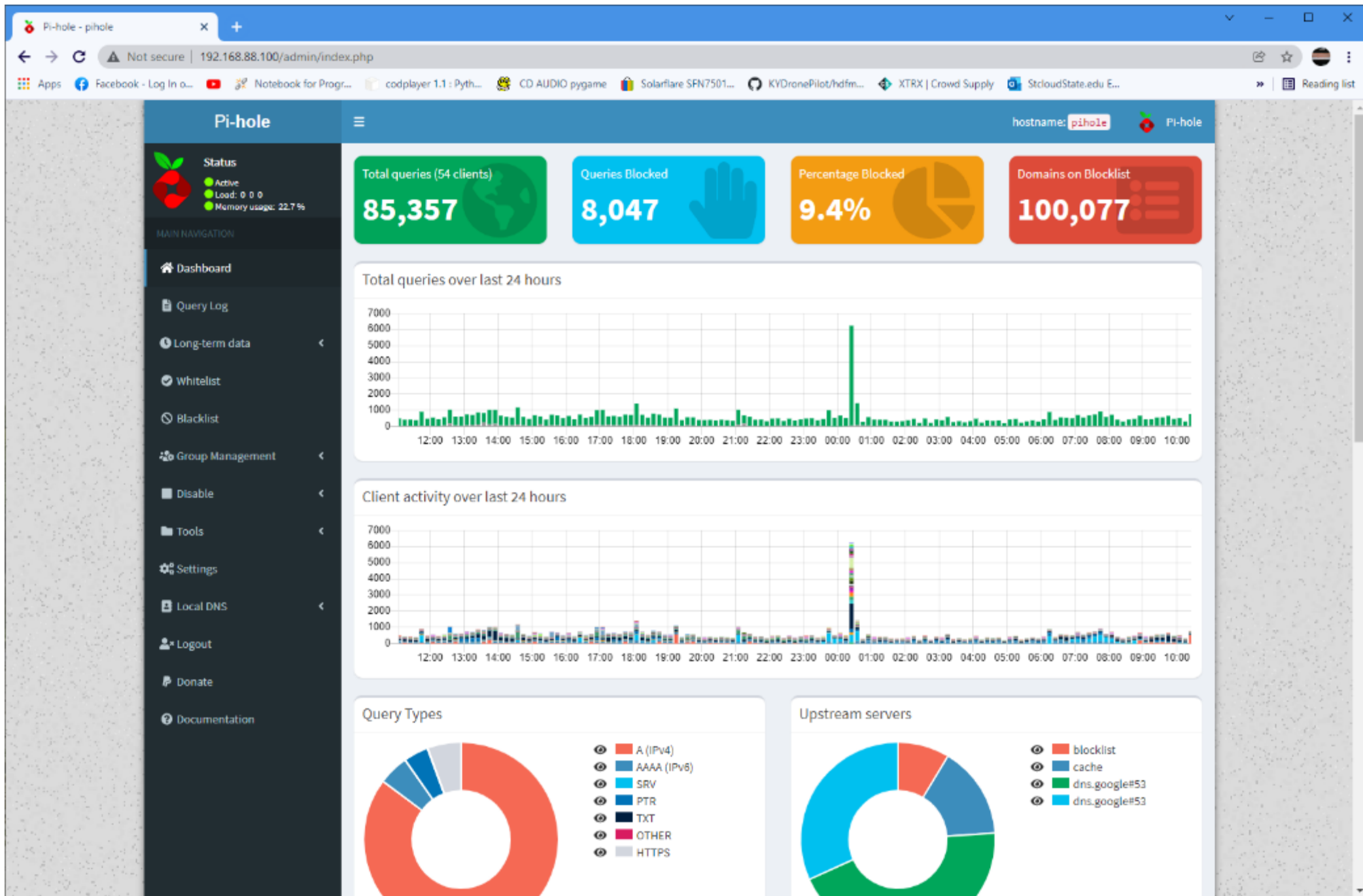
# 7 Layers of the OSI Model



<https://www.bmc.com/blogs/osi-model-7-layers/>







- VPN vs VNC – what are they and what are the differences?
- Physical security – what does it mean when we talk about air gaps?
- Data security – 2FA vs. MFA, why is an authenticator better than a text?
- Other thoughts?



# Online Information



## **Webinars**

<https://www.nautel.com/resources/webinars/>



## **Nautel Waves Newsletter**

<https://www.nautel.com/newsletters/>



## **YouTube**

<http://www.youtube.com/user/NautelLtd>



## **Online Info, such as the Broadcasters' Desktop Resource**

<https://www.thebdr.net/>

# THANK YOU!

