



**Jeff Welton**

Sales Manager, Central USA  
Nautel



**Kevin Trueblood**

Associate General Manager  
WVCU Public Media



**Aaron Read**

IT & Engineering Director  
Rhode Island Public Radio



**Alex Hartman**

Broadcast Integration Specialist  
Wisconsin Public Radio



Episode #60

IT Month

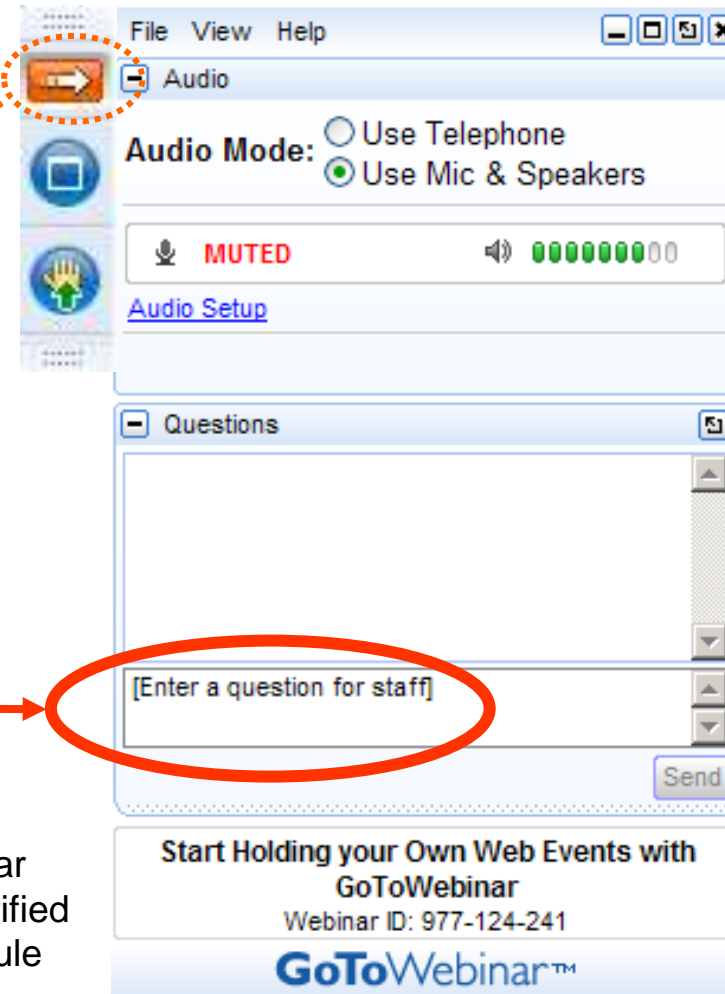
# Networking Intro

(For Non-IT Types)

# Your questions please?

(if you don't see the control panel, click on the orange arrow icon to expand it)

Please enter your questions in the text box of the webinar control panel (remember to press send)



The screenshot shows a GoToWebinar control panel window. At the top, there is a menu bar with 'File', 'View', and 'Help'. Below the menu bar, there is a vertical sidebar with several icons. The top icon is an orange arrow pointing right, which is circled in red and has a dotted orange line extending from it. Below this are icons for a computer monitor, a hand with a green arrow, and a globe. The main area of the control panel is divided into two sections. The top section is titled 'Audio' and contains 'Audio Mode' options: 'Use Telephone' (unselected) and 'Use Mic & Speakers' (selected). Below this is a 'MUTED' indicator with a microphone icon and a volume level indicator showing 00. A link for 'Audio Setup' is also present. The bottom section is titled 'Questions' and contains a large text input field with the placeholder text '[Enter a question for staff]'. This text box is circled in red and has a solid red arrow pointing to it from the left. To the right of the text box is a 'Send' button. At the bottom of the control panel, there is a promotional banner for GoToWebinar with the text 'Start Holding your Own Web Events with GoToWebinar' and 'Webinar ID: 977-124-241'.



Remember: The completion of a Nautel webinar qualifies for  $\frac{1}{2}$  SBE re-certification credit, identified under Category I of the Re-certification Schedule for SBE Certifications.



# Ideas for things to cover

- Partitioning – subnets, multiple domains, public IP or private network?
- Router, switch, hub – what are the differences and why does it matter?
- Security
  - Firewalls
  - VPNs
  - Port Forwarding (what is it and why?)
  - Education
- Other items
  - Online courses/resources?



**Submit a question now and we'll do our best to answer it in the session. If you have a relevant story to share please tell us now and we'll contact you for more information.**

Can the port forwarding option be changed rather than using the default 80?

Can you discuss firewalls and safe ways to put equipment on a WAN?

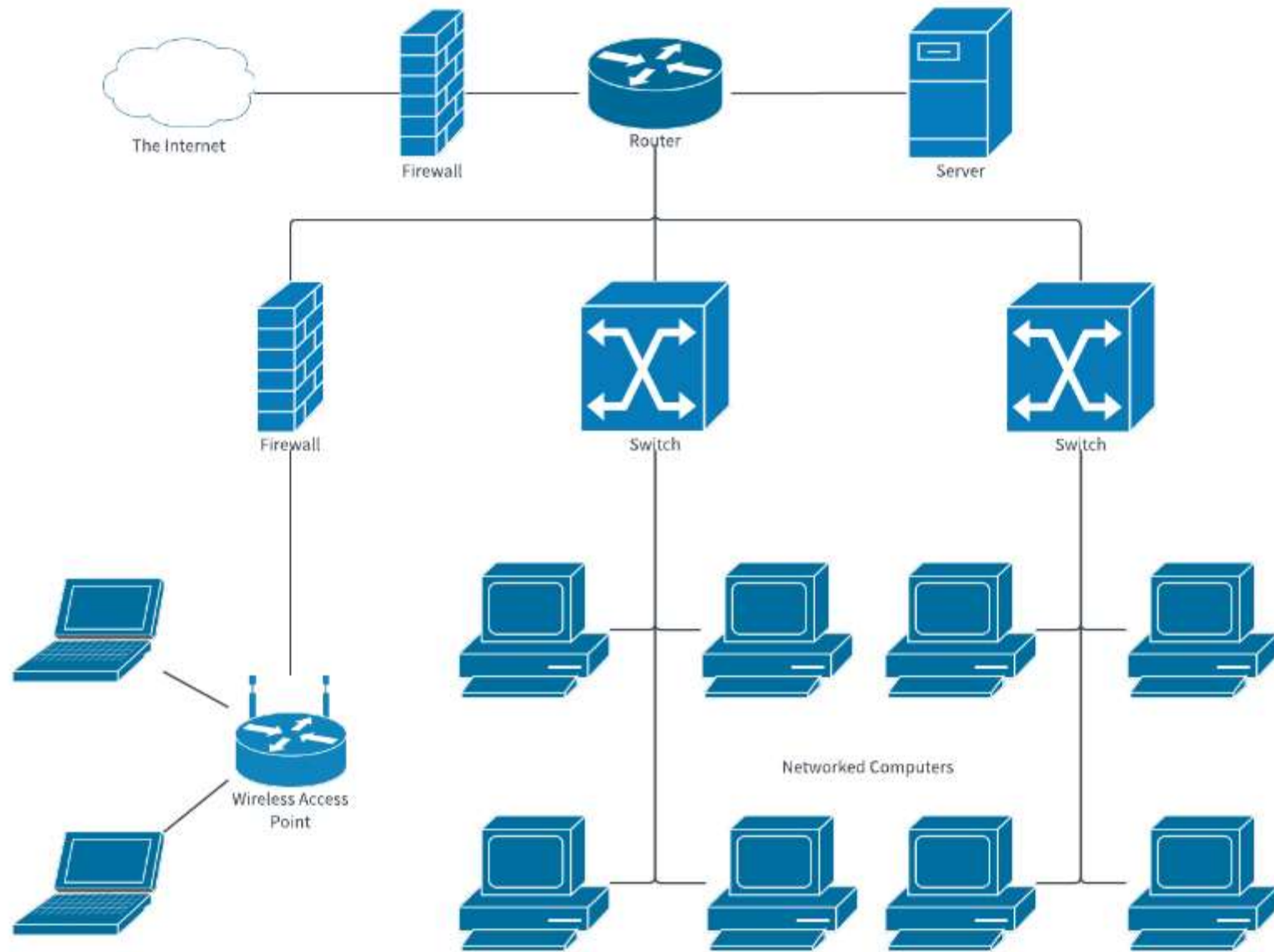
Since putting Win10 online, netbios is messed up on other pcs, how to subnet and allow access to resources?

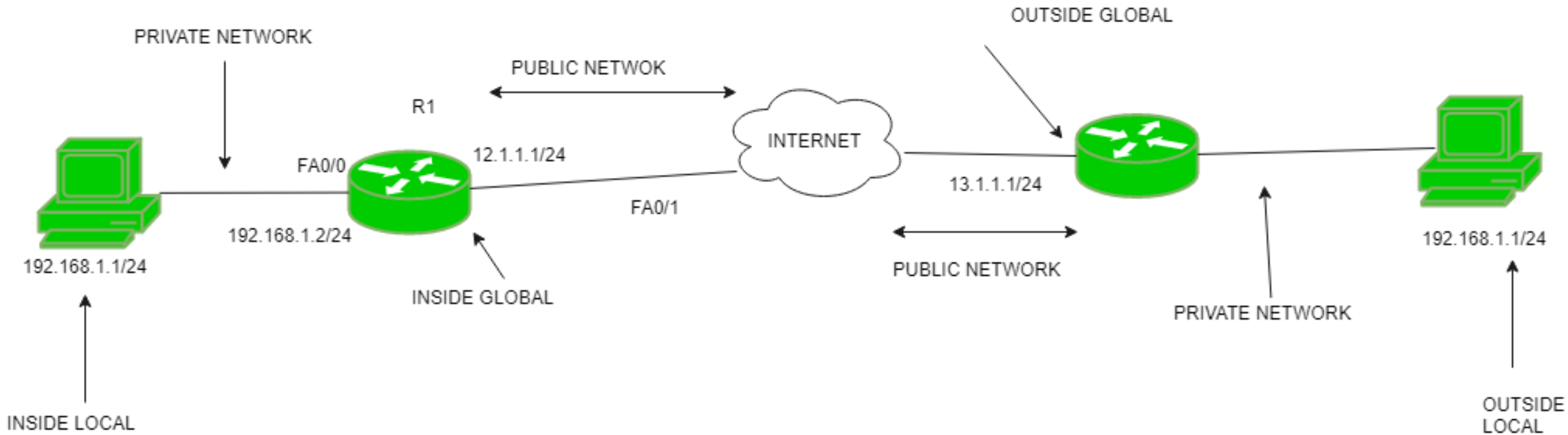
What are best practices for using more than one router on the same local network?

routers switches hubs

How about a suggestion for an online course (EdX, Udemy, etc) for a basic understanding of networking / Net+?

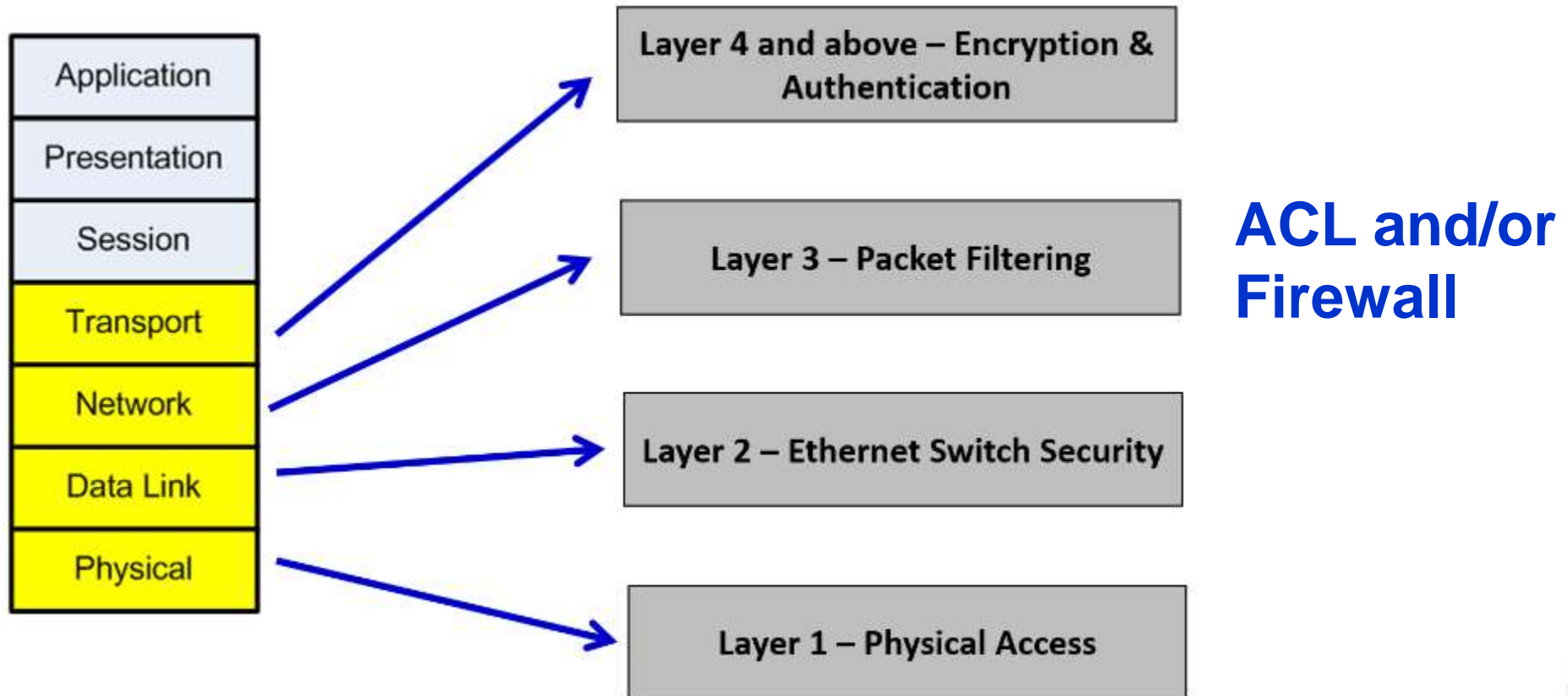






# Structured Implementation Plan

## OSI Model



# Do These 10 Things

Essential

- Change default logins
- Use strong passwords (paraphrases)
- Separate Admin & User accounts on hosts (WIN)
- Segment your network (VLAN) – create multi-layer security zones
- Use packet filtering to control host access (ACL and/or firewall)
- Disable un-used services – close ports not used
- Monitor your network – know what is normal
- Use secure access (SSH not telnet)
- Use VPN for off-site access
- Don't be a social engineering victim – educate users





# Studio Transmitter Link

---

Site Type: **Studio Encoder**

Stream Mode: Never

Keep-Alive: Passive

Connection Status: **Established FROM** XXXXXXXXXX

Incoming Stream Status:

Outgoing Stream Status:

Audio Input: Line Stereo

Audio Format: PCM 16bit mono big endian 24 kHz

Input Audio Level (L):	-14 dBFS	<div style="display: inline-block; width: 100px; height: 10px; background: linear-gradient(to right, green 40%, grey 40%);"></div>
Input Audio Level (R):	-13 dBFS	<div style="display: inline-block; width: 100px; height: 10px; background: linear-gradient(to right, green 45%, grey 45%);"></div>
Output Audio Level (L):	-93 dBFS	<div style="display: inline-block; width: 100px; height: 10px; background: linear-gradient(to right, grey 100%);"></div>
Output Audio Level (R):	-93 dBFS	<div style="display: inline-block; width: 100px; height: 10px; background: linear-gradient(to right, grey 100%);"></div>

Relay 1: always OFF

Relay 2: always OFF

Relay 3: always OFF

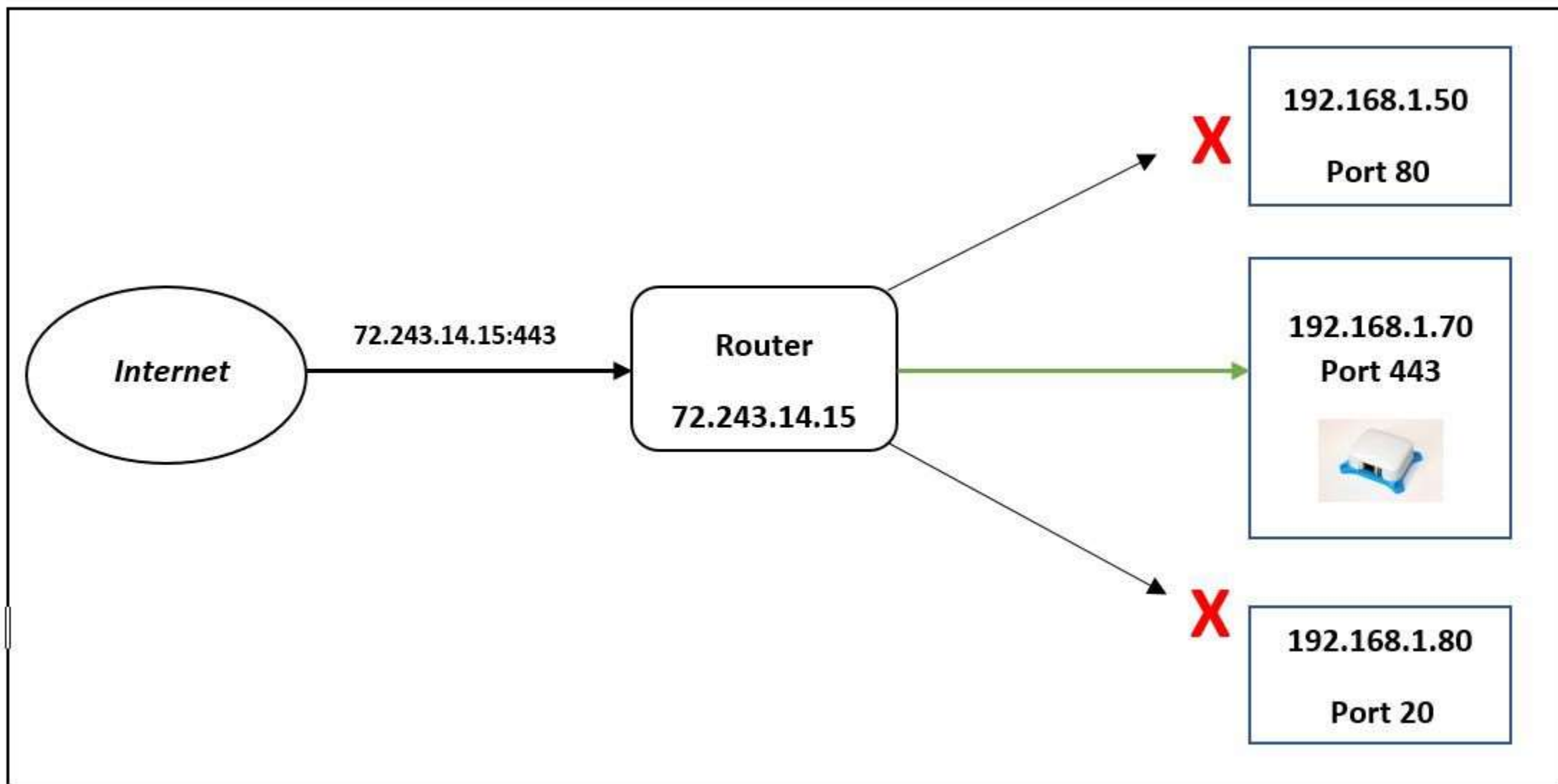
Relay 4: always OFF

Remote Inputs:

Local Inputs:

Local Relays:







STREAMING CLIENT

Player	Status	Source	Channel	Shuffle	Repeat
	PLAYING	URL 1	0	<input type="checkbox"/>	<input type="checkbox"/>

Stream Title: rtp://0.0.0.0:3030

Audio Output

Bitrate	128 kbps
Buffer	0164 B
Volume	80 %
Peak Left	-27 dB
Peak Right	-33 dB

Control Outputs: 1-8

MODEL732

Now Playing

RDS Data

RDS

Data Ports

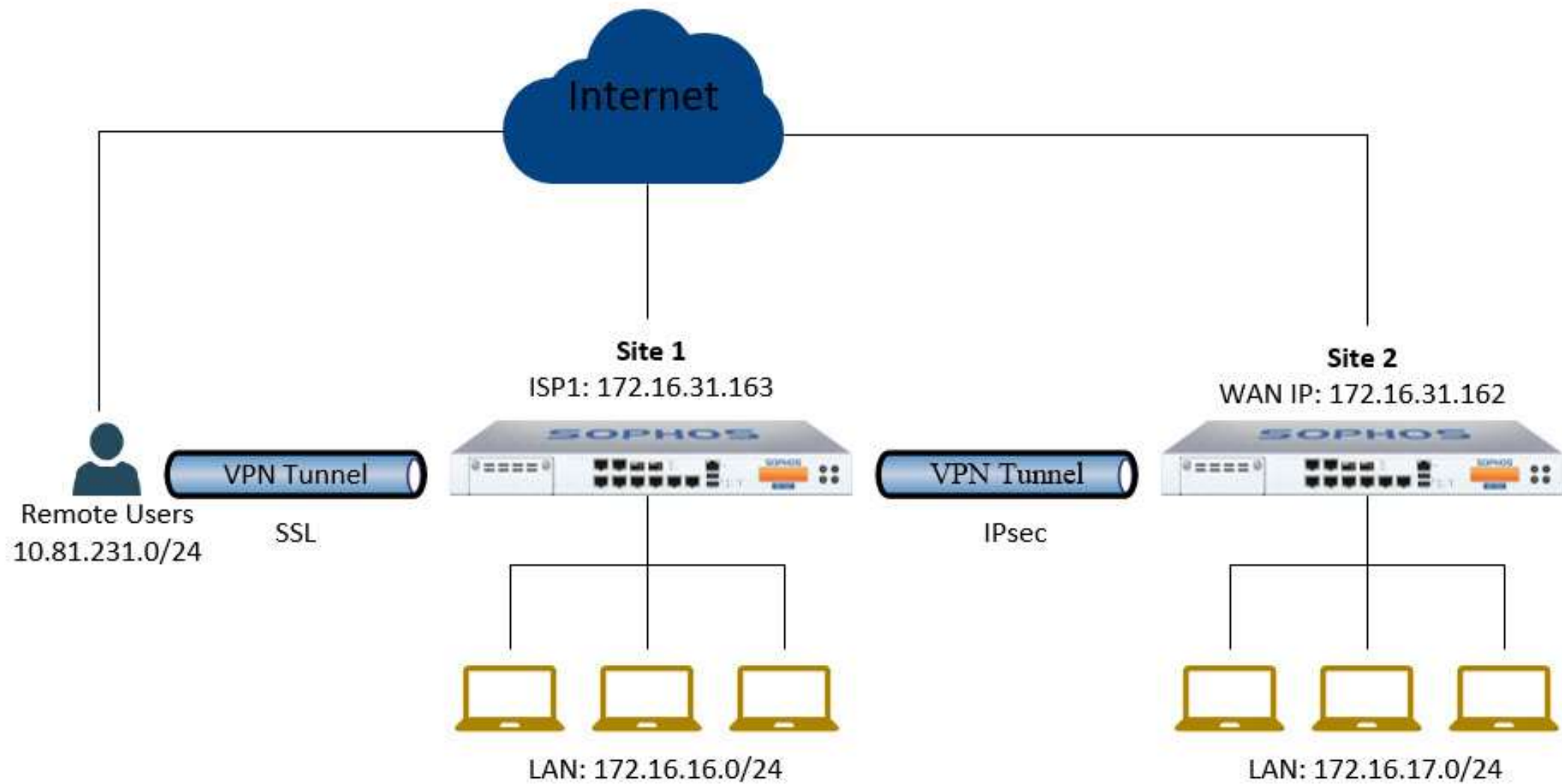
Scheduler

Alarms

PI:

Call:





## Hardware

*Ethernet Adapter*



*Ethernet Cable*



*Ethernet Switch*



*Virtualization with SoftEther VPN*

## Software

Virtual Network Adapter Name

- VPN Client Adapter - VPN
- VPN Client Adapter - VPN2
- VPN Client Adapter - TEST

*Virtual Ethernet Adapter*

VPN Tunnel

*VPN Session over TCP / UDP*

Virtual Hub Name	Status	Sessions	MAC Tables	IP Tables
BEIJING_SEGMENT	Online	0	0	0
CHINATEST	Online	2	0	0
moosta	Online	3	3	5
Okkota	Online	0	0	0
SoftEther Network	Online	20	474	430
TEST1	Online	0	0	0
UT	Online	0	0	0
VLAN	Online	3	514	2

*Virtual Ethernet Switch (Virtual Hub)*

# Points to Ponder

**Intrusion detection and prevention, active/stateful packet inspection, deep packet inspection**

**Don't poke holes in the firewall!**

**Multiple entry points**

**Easy, cheap, reliable – pick any two**

**Backup, backup, backup!!!**

**<https://www.cbtnuggets.com/>**



# Online Information



## **Webinars**

<https://www.nautel.com/resources/webinars/>



## **Nautel Waves Newsletter**

<https://www.nautel.com/newsletters/>



## **YouTube**

<http://www.youtube.com/user/NautelLtd>



## **Online Info, such as the Broadcasters' Desktop Resource**

<https://www.thebdr.net/>



# THANK YOU!

